

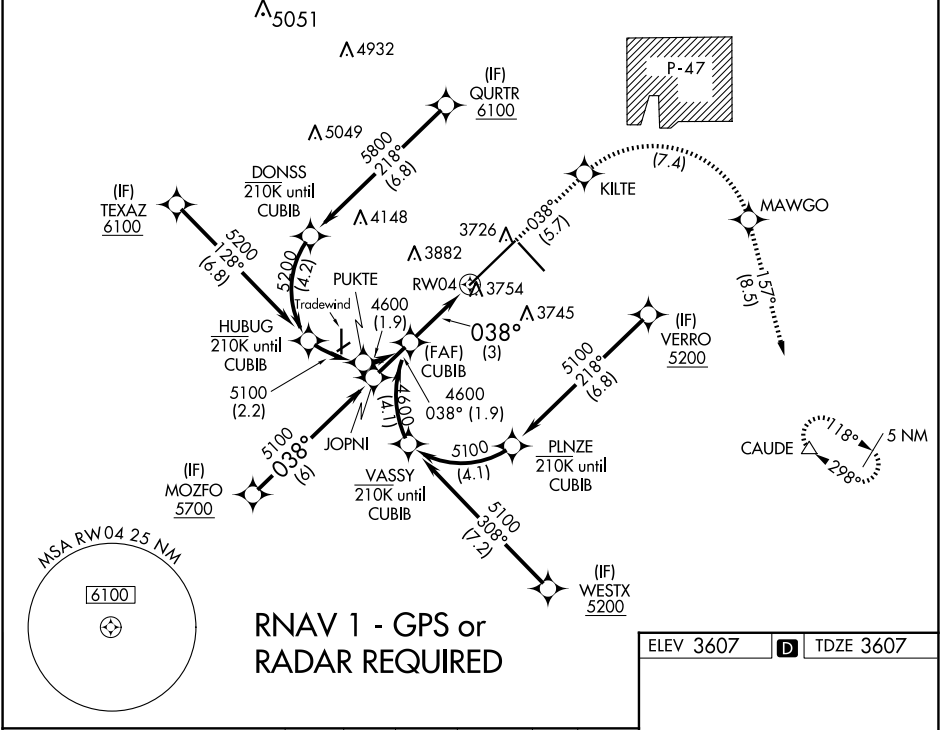
APP CRS <b>038°</b>	Rwy Idg TDZE Apt Elev	<b>13502</b> <b>3607</b> <b>3607</b>
------------------------	-----------------------------	--

# RNAV (RNP) Z RWY 4

RICK HUSBAND AMARILLO INTL (AMA)

<p><b>ASR</b> For uncompensated Baro-VNAV systems, procedure NA below -14°C (7°F) or above 53°C (128°F). RF required. GPS required. For inop ALS, increase RNP 0.30 all Cats visibility to 1 1/2 SM.</p>	<p><b>MALSR</b></p>	<p><b>MISSED APPROACH:</b> (Do not exceed 185K until MAWGO) Climb to 5400 on track 038° to KILTE, right turn to MAWGO, then track 157° to CAUDE and hold.</p>
--	---------------------	---

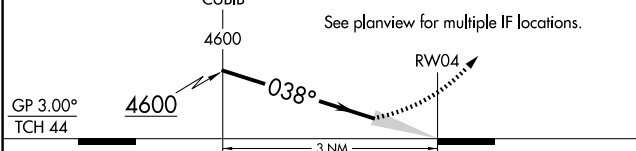
<p>ATIS <b>118.85 350.3</b></p>	<p>AMARILLO APP CON* <b>119.5 307.0</b></p>	<p>AMARILLO TOWER* <b>118.3(CTAF) 257.9</b></p>	<p>GND CON <b>121.9 348.6</b></p>	<p>CLNC DEL <b>121.65 239.275</b></p>	<p>UNICOM <b>122.95</b></p>
-------------------------------------	---	---	---------------------------------------	---	---------------------------------



SC-2, 23 JAN 2025 to 20 FEB 2025

SC-2, 23 JAN 2025 to 20 FEB 2025

<p>VGSI and RNAV glidepath not coincident (VGSI Angle 3.00/TCH 61).</p>	<p>5400 KILTE</p>	<p>MAWGO</p>	<p>CAUDE</p>
---	-------------------	--------------	--------------



GP 3.00° TCH 44	4600	3 NM		
CATEGORY	A	B	C	D
RNP 0.12 DA		3969/40	362 (400-3/4)	
RNP 0.30 DA		4019/50	412 (500-1)	

**AUTHORIZATION REQUIRED**

ELEV 3607	<b>D</b> TDZE 3607
-----------	--------------------

REIL Rwy 13 **1**  
HIRL Rwy 4-22 and 13-31 **1**