

LOC I-AIW 108.9	APP CRS 309°	Rwy Idg 9002
		TDZE 733
		Apt Elev 777

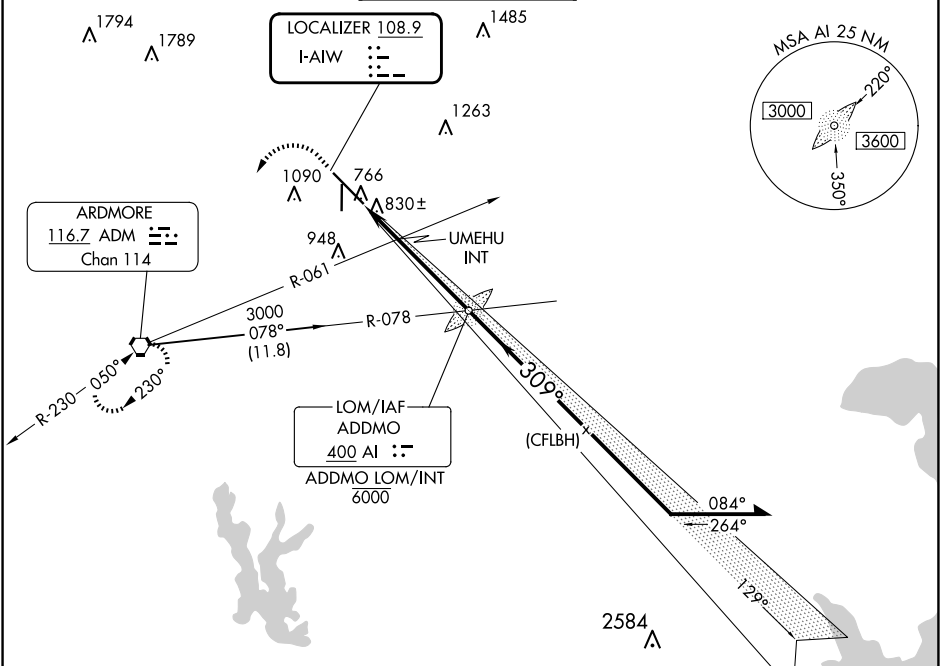
ILS or LOC RWY 31

ARDMORE MUNI (ADM)

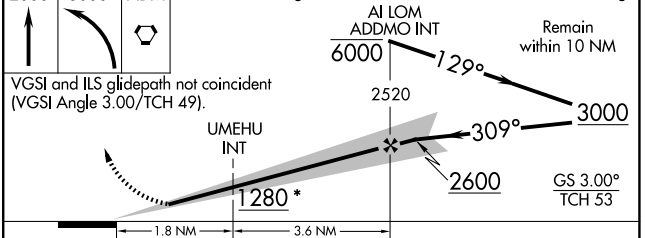
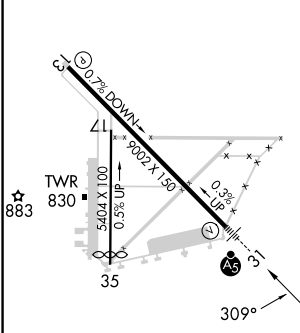
⚠ Autopilot coupled approach NA below 1360. Inop table does not apply to S-ILS 31 all Cats, S-LOC 31 Cats A and B, and UMEHU fix minimums S-LOC 31 Cats A and B. For inop ALS, increase UMEHU fix minimums S-LOC 31 Cats C and D visibility to 1 SM.

MALS MISSED APPROACH: Climb to 2000 then climbing left turn to 3000 direct ADM VORTAC and hold.

ATIS 125.6	FORT WORTH CENTER 124.75 323.0	ARDMORE TOWER ★ 118.5 (CTAF) 257.7	GND CON 121.8	UNICOM 122.95
----------------------	--	--	-------------------------	-------------------------



ELEV 777 **D** TDZE 733



HIRL Rwy 13-31 **⓪**

MIRL Rwy 17-35

FAF to MAP 5.4 NM

Knots	60	90	120	150	180
Min:Sec	5:24	3:36	2:42	2:10	1:48

VGSI and ILS glidepath not coincident (VGSI Angle 3.00/TCH 49).	AI LOM ADDMO INT				Remain within 10 NM	
	2000	3000	ADM	*1320 when using Ardmore Downtown Executive altimeter setting.	6000	3000
					2520	2600
					129°	309°
					1.8 NM	3.6 NM
CATEGORY	A	B	C	D		
S-ILS 31	936-1/2			203 (200-1/2)		
S-LOC 31*	1280-1/2	547 (600-1/2)	1280-1 1/8	547 (600-1 1/8)		
CIRCLING	1300-1 523 (600-1)	1440-1 663 (700-1)	1500-2 723 (800-2)	1700-3 923 (1000-3)		
UMEHU FIX MINIMUMS (DUAL RECEIVERS REQUIRED)						
S-LOC 31	1080-1/2	347 (400-1/2)	1080-5/8	347 (400-5/8)		
CIRCLING	1300-1 523 (600-1)	1440-1 663 (700-1)	1500-2 723 (800-2)	1700-3 923 (1000-3)		

SC-1, 23 JAN 2025 to 20 FEB 2025

SC-1, 23 JAN 2025 to 20 FEB 2025