

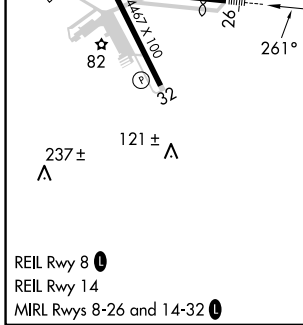
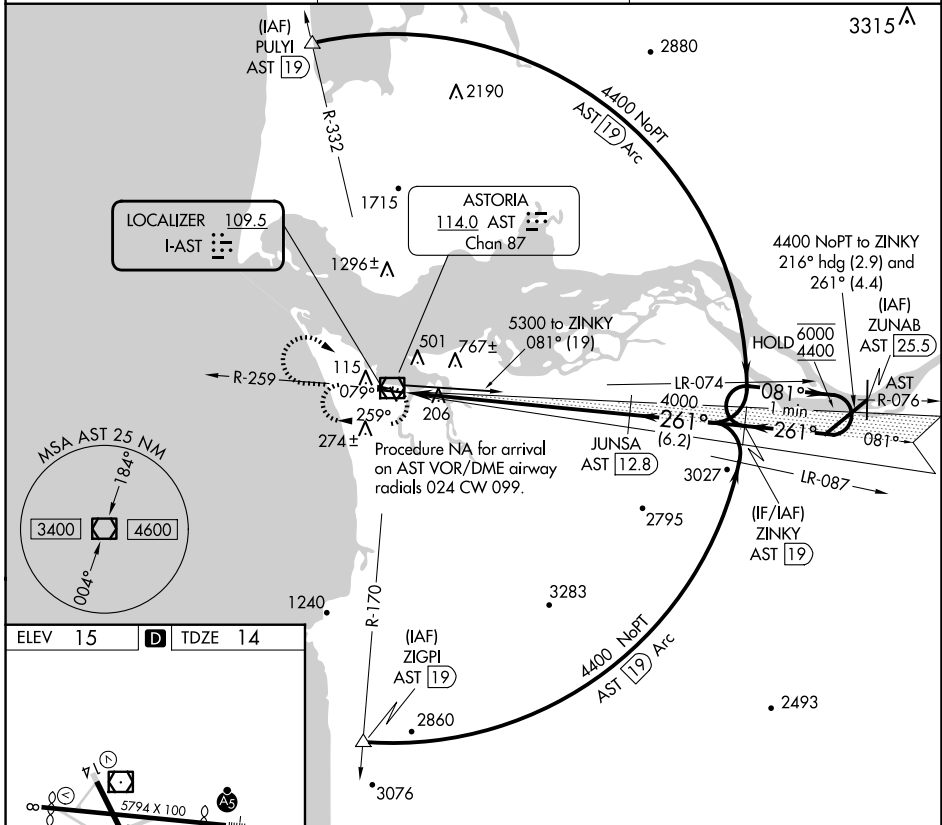
LOC I-AST 109.5	APP CRS 261°	Rwy Idg TDZE Apt Elev	4780 14 15
---------------------------	------------------------	-----------------------------	---------------------------------------

ILS RWY 26

ASTORIA RGNL (AST)

DME required for procedure entry.		MALSRL	MISSED APPROACH: Climb to 1500 then climbing right turn to 2900 direct AST VOR/DME and hold.
<p>▼ Rwy 26 helicopter visibility reduction below 3/4 SM NA. Inoperative table does not apply.</p>			

ASOS 135.375	SEATTLE CENTER 124.2 317.6	UNICOM 122.8 (CTAF) 0
------------------------	--------------------------------------	---------------------------------



ELEV 15	D	TDZE 14
1500	2900	AST
↑	↪	
JUNSA AST 12.8	ZINKY AST 19.0	One Minute Holding Pattern
4000	6000	081° →
4000	4400	← 261°
GS 3.00°		
TCH 56		
12.3 NM		
6.2 NM		
CATEGORY	A	B
S-ILS 26	264-1 250 (300-1)	

ASTORIA, OREGON
Amdt 3C 11JUL24

46°09'N-123°53'W

ASTORIA RGNL (AST)
ILS RWY 26

NW-1, 23 JAN 2025 to 20 FEB 2025

NW-1, 23 JAN 2025 to 20 FEB 2025