


LOC I-AUG <b>108.7</b>	APP CRS <b>171°</b>	Rwy Idg 5002	TDZE 348
		Apt Elev 352	

# ILS or LOC RWY 17

AUGUSTA STATE (AUG)

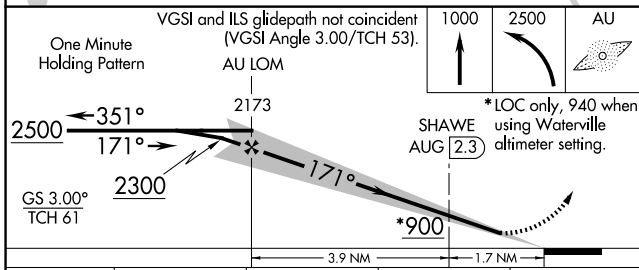
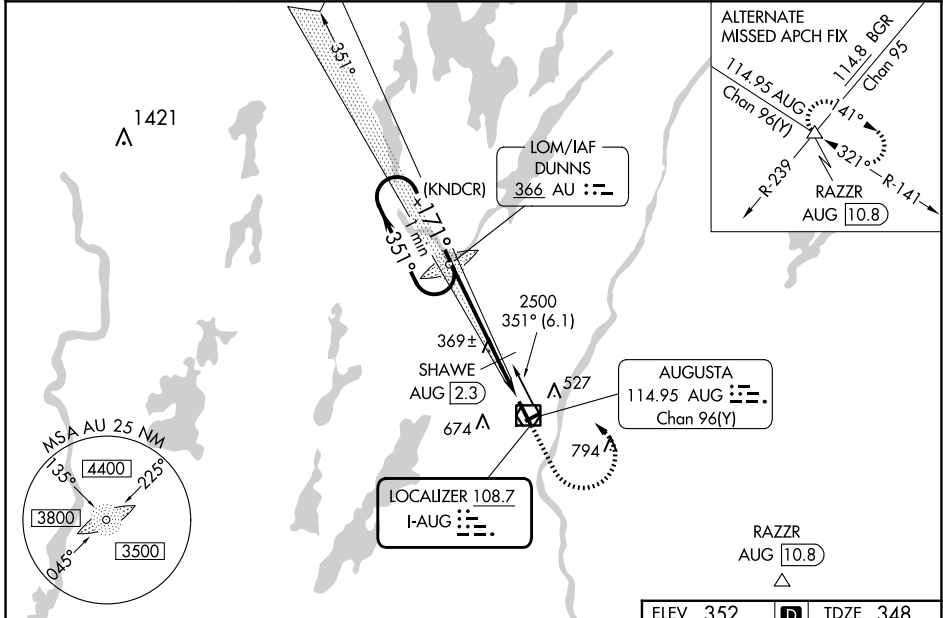
ADF required.

Localizer unusable from 0.5 NM to threshold above 1500 feet. When local altimeter setting not received, use Waterville altimeter setting; increase S-ILS 17 DA to 583; increase all MDAs 40 feet and visibility S-LOC 17 Cat C and D 1/8 SM, and Circling Cat D 1/4 SM; SHAWE fix minimums increase S-LOC 17 Cat C and D visibility 1/8 SM, and Circling Cat D visibility 1/4 SM. Glideslope unusable below 430 feet. Circling Rwy 8, 26 NA at night. # DME from AUG VOR/DME.

MALS 

MISSED APPROACH: Climb to 1000 then climbing left turn to 2500 direct DUNNS LOM and hold.

ASOS <b>118.325</b>	PORTLAND APP CON * <b>128.35 299.2</b>	CLNC DEL <b>119.95 299.2</b>	UNICOM <b>123.0 (CTAF)</b>
------------------------	---	---------------------------------	-------------------------------



ELEV 352 D TDZE 348


171°


5002 X 100


2613 X 75

35


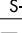
8

HIRL Rwy 17-35 

MIRL Rwy 8-26 

REIL Rwy 35 

	FAF to MAP 5.6 NM				
Knots	60	90	120	150	180
Min:Sec	5:36	3:44	2:48	2:14	1:52

CATEGORY	A	B	C	D
S-ILS 17		548-1/2	200 (200-1/2)	
S-LOC 17	900-1/2	552 (600-1/2)	900-1 1/4	552 (600-1 1/4)
 CIRCLING	940-1 588 (600-1)	980-1 628 (700-1)	980-1 3/4 628 (700-1 3/4)	1160-2 1/2 808 (900-2 1/2)
SHAWE FIX MINIMUMS #				
S-LOC 17		620-1/2	272 (300-1/2)	
 CIRCLING	940-1 588 (600-1)	980-1 628 (700-1)	980-1 3/4 628 (700-1 3/4)	1160-2 1/2 808 (900-2 1/2)

NE-1, 23 JAN 2025 to 20 FEB 2025

NE-1, 23 JAN 2025 to 20 FEB 2025