

VOR/DME BKE 115.3 Chan 100	APP CRS 135°	Rwy Idg TDZE Apt Elev 3373	N/A N/A 3373
--	------------------------	--------------------------------------	---

VOR-A

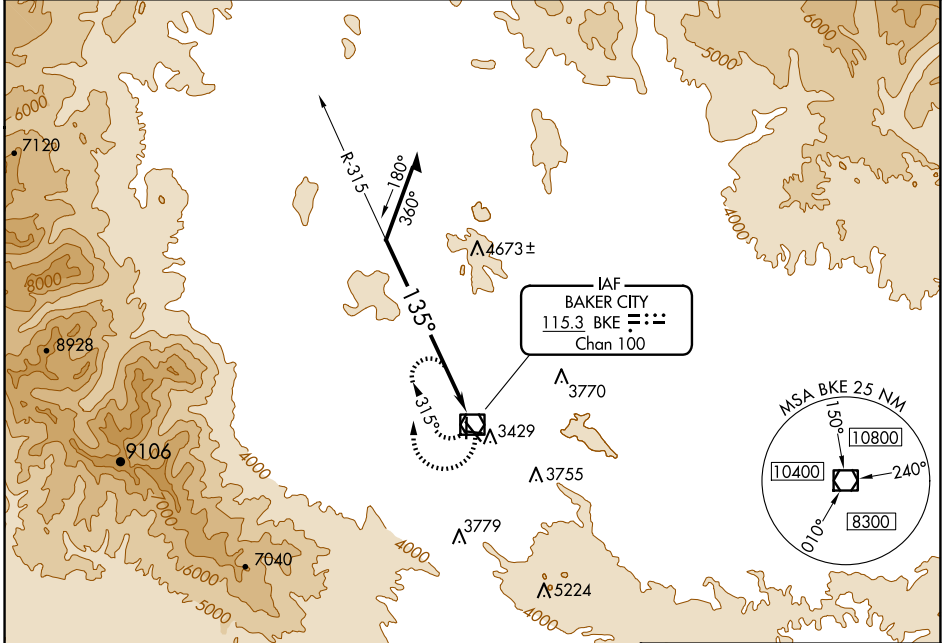
BAKER CITY MUNI (BKE)

⚠ Circling to Rwy 8/17/26/35 NA at night. Helicopter visibility reduction below 1 SM NA.

⚠ -23°C

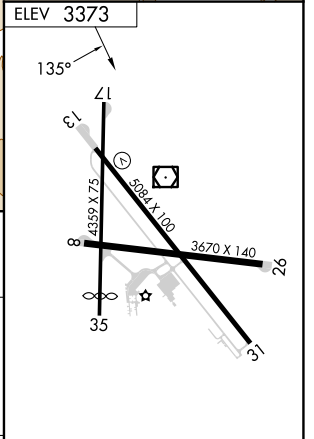
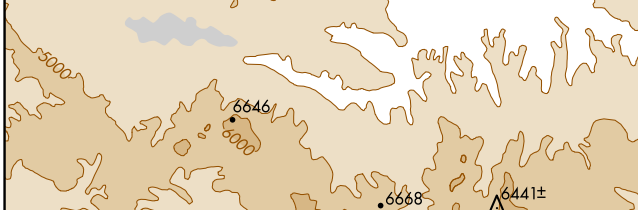
MISSED APPROACH: Climbing right turn to 6900 in BKE VOR/DME holding pattern.

ASOS 134.275	SALT LAKE CENTER 128.05 306.95	UNICOM 123.0 (CTAF) 0
------------------------	--	---------------------------------



NW-1, 23 JAN 2025 to 20 FEB 2025

NW-1, 23 JAN 2025 to 20 FEB 2025



CATEGORY	A	B	C	D
	5200-1¼ 1827 (1900-1¼)	5200-1½ 1827 (1900-1½)	5200-3	1827 (1900-3)

C CIRCLING	5200-1¼ 1827 (1900-1¼)	5200-1½ 1827 (1900-1½)	5200-3	1827 (1900-3)
-------------------	---------------------------	---------------------------	--------	---------------

REIL Rwys 13 and 31 **0**
MIRL Rwy 13-31 **0**