

LOC/DME I-BFL 111.9 Chan 56	APP CRS 301°	Rwy Idg TDZE Apt Elev	7429 493 510
--	------------------------	-----------------------------	---

ILS or LOC RWY 30R

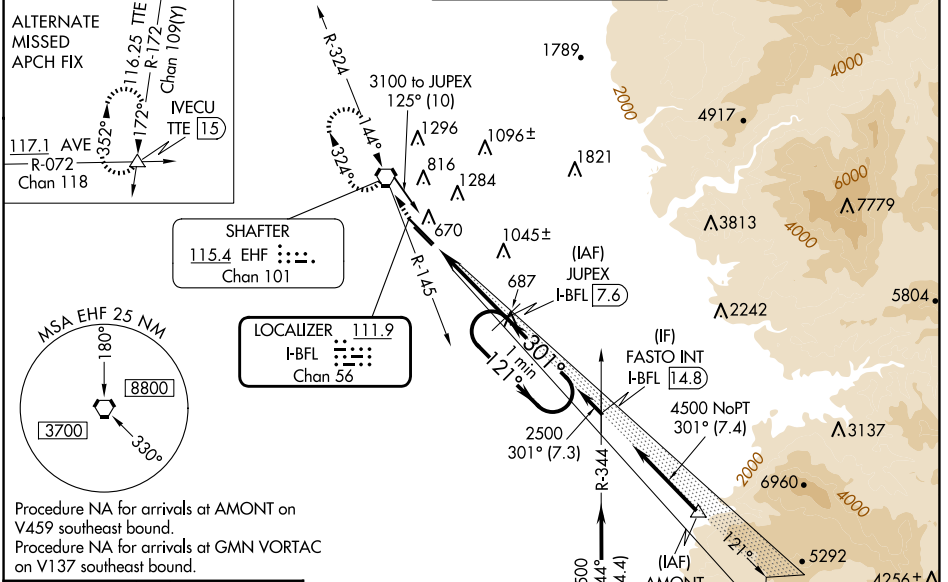
MEADOWS FLD (BFL)

⚠ Circling NA northeast of Rwy 12L-30R. DME Required. VDP NA with Porterville altimeter setting. When local altimeter setting not received, use Porterville altimeter setting: increase DA to 790 and all visibilities to RVR 2200; increase all MDA 100 feet and visibility Cats C and D to RVR 6000. For inop ALS, increase S-LOC 30R Cat A and B visibility to RVR 5000. For inop ALS when using Porterville altimeter setting, increase S-ILS 30R all Cats visibility to RVR 5000.

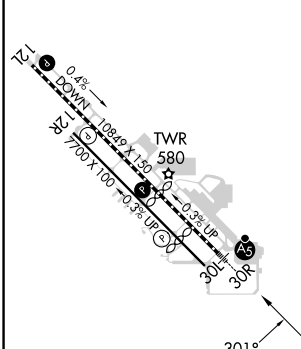
MALSR

MISSED APPROACH: Climb to 1000 then climbing right turn to 3000 on EHF VORTAC R-145 direct EHF VORTAC and hold, continue climb-in-hold to 3000.

ATIS 118.6	BAKERSFIELD APP CON* 118.8 284.625 118.9 270.3 (SOUTH) (NORTH)	BAKERSFIELD TOWER* 118.1 (CTAF) 257.8	GND CON 121.7	UNICOM 122.95
----------------------	---	---	-------------------------	-------------------------



ELEV 510	D	TDZE 493
----------	----------	----------



TDZ/CL Rwy 30R				
HIRL Rwy 12L-30R				
MIRL Rwy 12R-30L				
REIL Rws 12R and 30L				
C CIRCLING	960-1	450 (500-1)	960-1½	1060-2
S-ILS 30R	698/18		205 (200-½)	
S-LOC 30R	940/24	447 (500-½)	940/45	447 (500-¾)

SW-3, 23 JAN 2025 to 20 FEB 2025

SW-3, 23 JAN 2025 to 20 FEB 2025