

# RNAV (GPS) RWY 30R

MEADOWS FLD (BFL)

WAAS CH <b>58118</b> <b>W30A</b>	APP CRS <b>301°</b>	Rwy Idg TDZE Apt Elev	<b>7429</b> <b>493</b> <b>510</b>
--	------------------------	-----------------------------	---

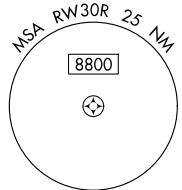
RNP APCH

▼ For uncompensated Baro-VNAV systems, LNAV/VNAV NA below 0°C (32°F) or above 54°C (130°F). Circling NA northeast of Rwy 12L-30R. When local altimeter setting not received, use Porterville altimeter setting: increase LPV DA to 790, LNAV/VNAV DA to 990. Increase LNAV/VNAV all Cats visibilities to 1 1/4 mile; increase all MDA 100 feet and LNAV visibility Cats C and D to RVR 5000. VDP and Baro-VNAV NA when using Porterville altimeter setting. For inop ALS when using Porterville altimeter setting, increase LPV all Cats visibility to RVR 5000 and LNAV Cat C and D visibility to 1 3/8. # RVR 2400 when using Porterville altimeter setting.

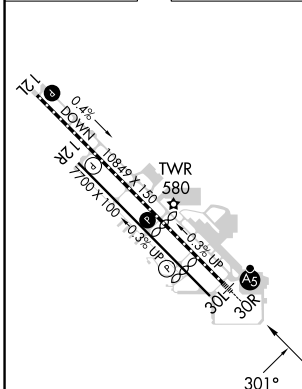


MISSED APPROACH: Climb to 1000 then climbing right turn to 3000 direct STEBN and hold.

ATIS <b>118.6</b>	BAKERSFIELD APP CON ★ <b>118.8 284.625 118.9 270.3</b> (SOUTH) (NORTH)	BAKERSFIELD TOWER ★ <b>118.1 (CTAF) 0 257.8</b>	GND CON <b>121.7</b>	UNICOM <b>122.95</b>
----------------------	--	--	-------------------------	-------------------------



ELEV 510	<b>D</b>	TDZE 493
----------	----------	----------



TDZ/CL Rwy 30R	
HIRL Rwy 12L-30R	Ⓢ
MIRL Rwy 12R-30L	Ⓢ
REIL Rwy 12R and 30L	

1000	3000	STEBN	FASTO
*LNAV only		HOYMI 2.1 NM to RWY30R	JUPEX 2500
RWY30R		1200*	301° 3500
-1.1 NM		-1 NM	-4.1 NM
-7.3 NM			
CATEGORY	A	B	C
LPV DA#	698/18		205 (200-1/2)
LNAV/VNAV DA	898/45		405 (400-3/4)
LNAV MDA	880/24	387 (400-1/2)	880/35 387 (400-3/4)
CIRCLING	960-1	450 (500-1)	960-1 1/2 1060-2
			450 (500-1 1/2) 550 (600-2)

SW-3, 23 JAN 2025 to 20 FEB 2025

SW-3, 23 JAN 2025 to 20 FEB 2025