

(CRAZI.CRAZI) 23110

# CRAZI FOUR ARRIVAL (RNAV)

AL-48 (FAA)

BILLINGS LOGAN INTL (BIL)  
BILLINGS, MONTANA

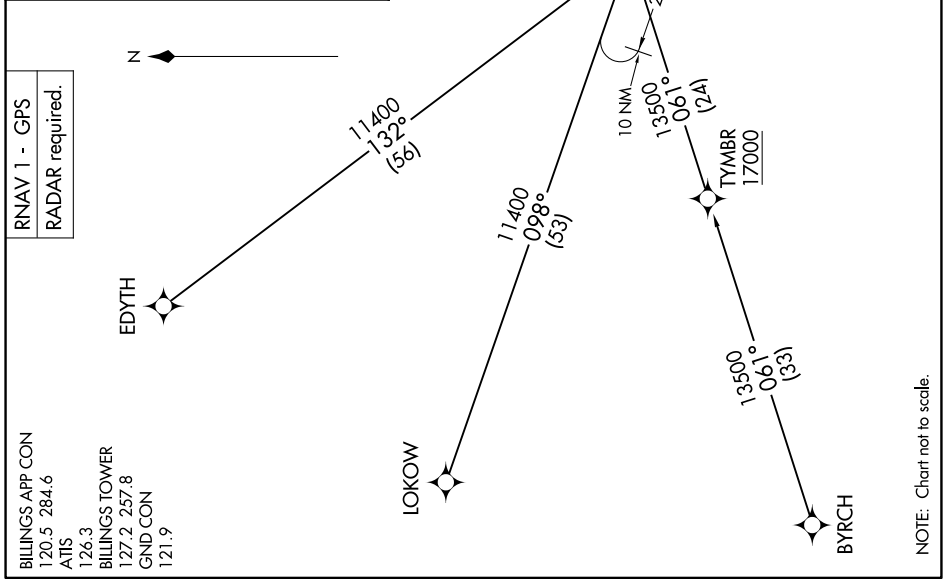
NW-1, 23 JAN 2025 to 20 FEB 2025

**ARRIVAL ROUTE DESCRIPTION**

BYRCH TRANSITION (BYRCH.CRAZI4)  
EDYTH TRANSITION (EDYTH.CRAZI4)  
LOKOW TRANSITION (LOKOW.CRAZI4)

LANDING RUNWAY 10L: From CRAZI on track 105° to cross LRSUN at 8000 and at 230K. Expect assigned approach or RADAR vectors to final approach course.

LANDING RUNWAY 28R: From CRAZI on track 098° to cross BBCAT at 8000 and at 210K, then on heading 102° or as assigned by ATC. Expect assigned approach or RADAR vectors to final approach course.



# CRAZI FOUR ARRIVAL (RNAV)

(CRAZI.CRAZI) 20APR23

BILLINGS, MONTANA  
BILLINGS LOGAN INTL (BIL)

NW-1, 23 JAN 2025 to 20 FEB 2025