

BILLINGS, MONTANA

HI-ILS Z or LOC Z RWY 10L

LOC/DME I-BIL 111.5 Chan 52	APCH CRS 102°	Rwy Idg 10,518 TDZE 3585 Arprt Elev 3662
---	-------------------------	---

AL-48 [USAF]

BILLINGS LOGAN INTL (KBIL)

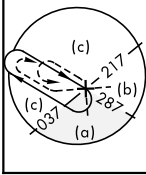
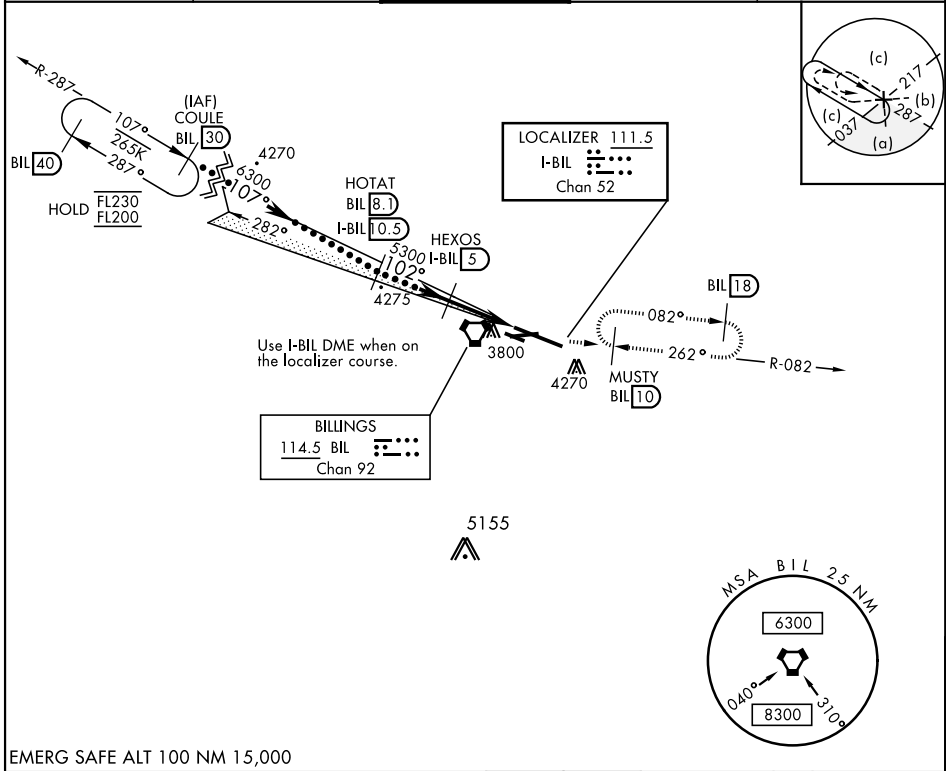
DME required. RADAR required for procedure entry.



MISSED APPROACH: Climb to 5700 on BIL VORTAC R-082 to MUSTY/10 DME and hold.

▼ * When ALS inop, increase CAT E RVR to 40.
** When ALS inop, increase CAT CDE RVR to 60.

ATIS 126.3	BILLINGS APP CON 120.5 284.6	BILLINGS TOWER 127.2 257.8	GND CON 121.9	CLNC DEL 121.9
----------------------	--	--------------------------------------	-------------------------	--------------------------



EMERG SAFE ALT 100 NM 15,000

COULE FL200 107°	HOTAT I-BIL 8.1 102°	HEXOS I-BIL 5	ZOBUM I-BIL 2.1	LOC DME	5700 BIL R-082	MUSTY BIL 10	ELEV 3662	TDZE 3585
GS 3.00° TCH 51	6300	5300	4360	2.9 NM	2.1 NM	.2	102° 5.2 NM from LOM	3517
CATEGORY	C	D	E					
S-ILS 10L *	3785/24 200 (200-½)			3860 x 75 3761 3619 TWR 3703 1.9% UP 0.9% DOWN 10,518 x 150 28R				
S-LOC 10L **	4000/40 415 (500-¾)			REIL Rwy 25 and 28R HIRL Rwy 10L-28R MIRL Rwy 7-25 and 10R-28L				
CIRCLING	4180-1½ 518 (600-1½)		4580-3 918 (1000-3)					

BILLINGS, MONTANA

45°48'N-108°33'W

BILLINGS LOGAN INTL (KBIL)

Amdt 4A 22APR21

HI-ILS Z or LOC Z RWY 10L

NW-1, 23 JAN 2025 to 20 FEB 2025

NW-1, 23 JAN 2025 to 20 FEB 2025