

APP CRS **058°**
 Rwy ldg **12007**
 TDZE **606**
 Apt Elev **650**

RNAV (RNP) Z RWY 6

BIRMINGHAM-SHUTTLESWORTH INTL (BHM)

RNP AR APCH. RF required.

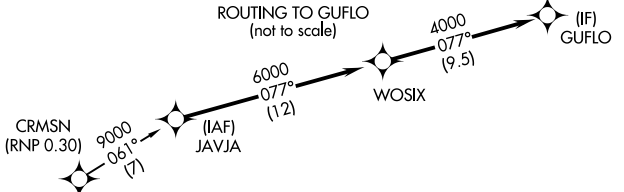
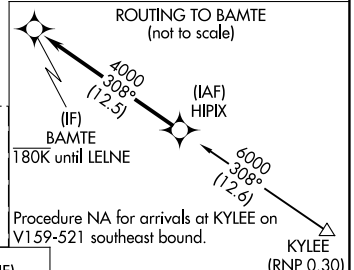
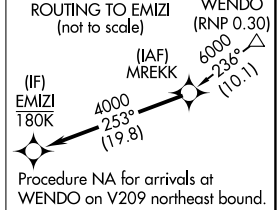
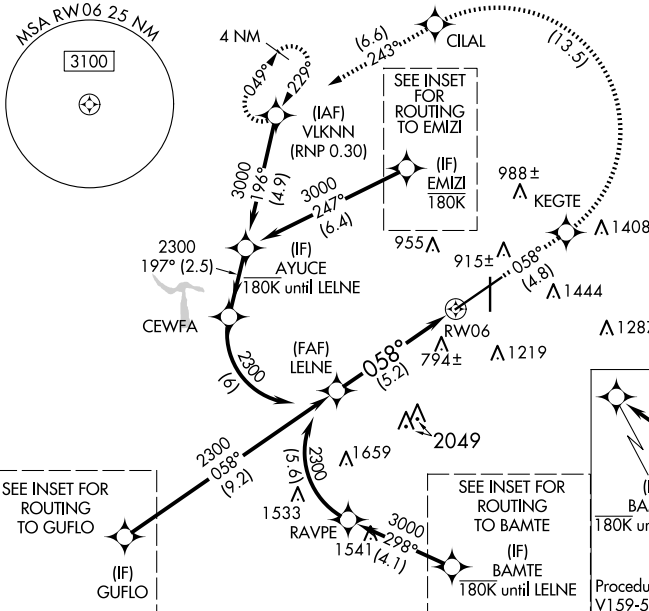
ALSF-2

▼ For uncompensated Baro-VNAV systems, procedure NA below -8°C or above 54°C.

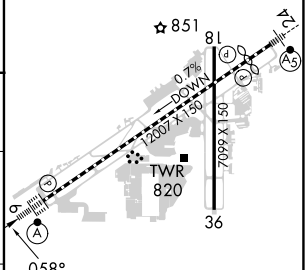
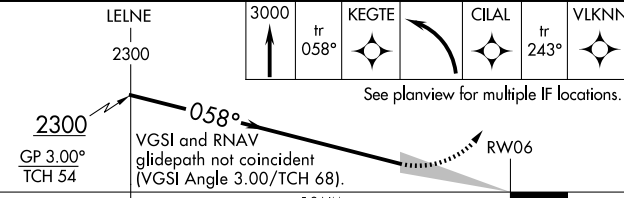


MISSED APPROACH: Climb to 3000 on track 058° to KEGTE left turn to CILAL and track 243° to VLKNN and hold.

| | | | | |
|----------------------------|--|--|-------------------------------|----------------------------------|
| ATIS 119.4 270.1 | BIRMINGHAM APP CON 123.8 256.8 | BIRMINGHAM TOWER 119.9 317.725 | GND CON 121.7 348.6 | CLNC DEL 125.675 305.2 |
|----------------------------|--|--|-------------------------------|----------------------------------|



ELEV 650 **D** TDZE 606



| | | | | |
|-------------|---|---------|-------------|---|
| CATEGORY | A | B | C | D |
| RNP 0.30 DA | | 1138/55 | 532 (500-1) | |

REIL Rwy 18 and 36
 TDZ/CL Rwy 6
 HIRL Rwy 6-24
 MIRL Rwy 18-36

AUTHORIZATION REQUIRED

SE-4, 23 JAN 2025 to 20 FEB 2025

SE-4, 23 JAN 2025 to 20 FEB 2025