

WAAS CH <b>58306</b> <b>W18A</b>	APP CRS <b>181°</b>	Rwy ldg <b>11602</b> TDZE <b>250</b> Apt Elev <b>254</b>
--	------------------------	--

# RNAV (GPS) RWY 18

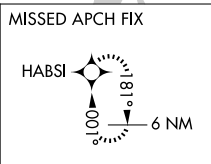
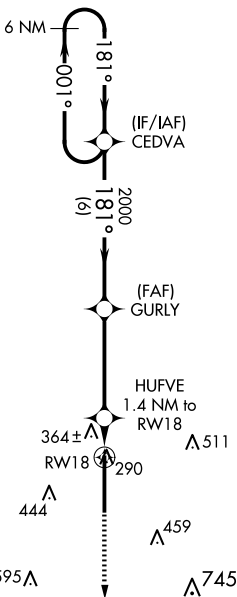
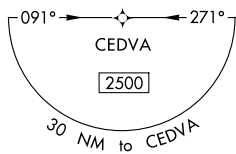
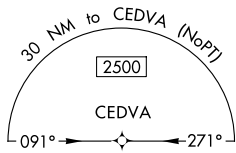
ARKANSAS INTL (BYH)

**▽** Inop table does not apply. Baro-VNAV NA when using Blytheville Muni altimeter setting. For uncompensated Baro-VNAV systems, LNAV/VNAV NA below -1.5°C (5°F) or above 54°C (130°F). Circling NA east of Rwy 18-36. DME/DME RNP-0.3 NA. Obtain local altimeter setting on CTAF; when not received, use Blytheville Muni altimeter setting and increase all DA 14 feet and all MDA 20 feet. Increase LNAV/VNAV all Cats and LNAV Cats C/D visibility 1/8 mile.

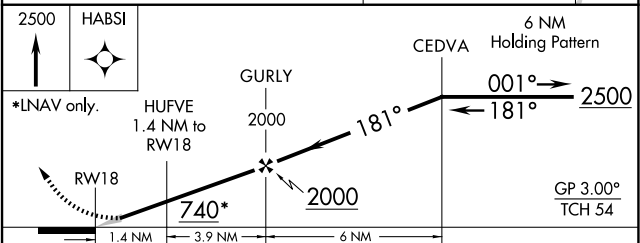
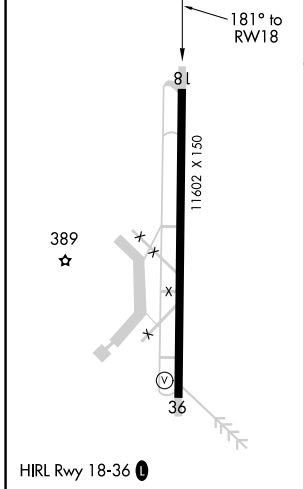
**MISSED APPROACH:** Climb to 2500 direct HABS1 and hold.

MEMPHIS CENTER  
**134.65 316.15**

UNICOM  
**122.7 (CTAF) 0**



ELEV 254	TDZE 250
----------	----------



CATEGORY	A	B	C	D
LPV DA		450-3/4	200 (200-3/4)	
LNAV/VNAV DA		545-1	295 (300-1)	
LNAV MDA		620-1	370 (400-1)	
<b>C</b> CIRCLING	700-1 446 (500-1)	720-1 466 (500-1)	800-1½ 546 (600-1½)	820-2 566 (600-2)

SC-1, 23 JAN 2025 to 20 FEB 2025

SC-1, 23 JAN 2025 to 20 FEB 2025