

WAAS CH <b>78318</b> <b>W36A</b>	APP CRS <b>001°</b>	Rwy ldg <b>11602</b> TDZE <b>254</b> Apt Elev <b>254</b>
--	------------------------	--

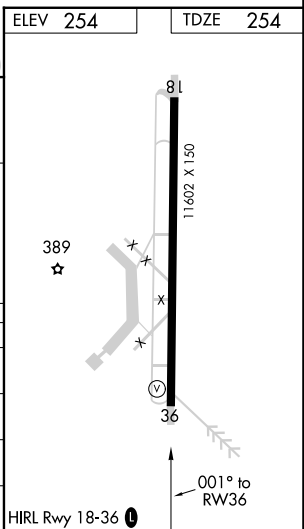
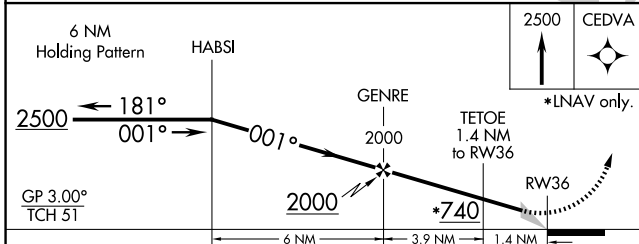
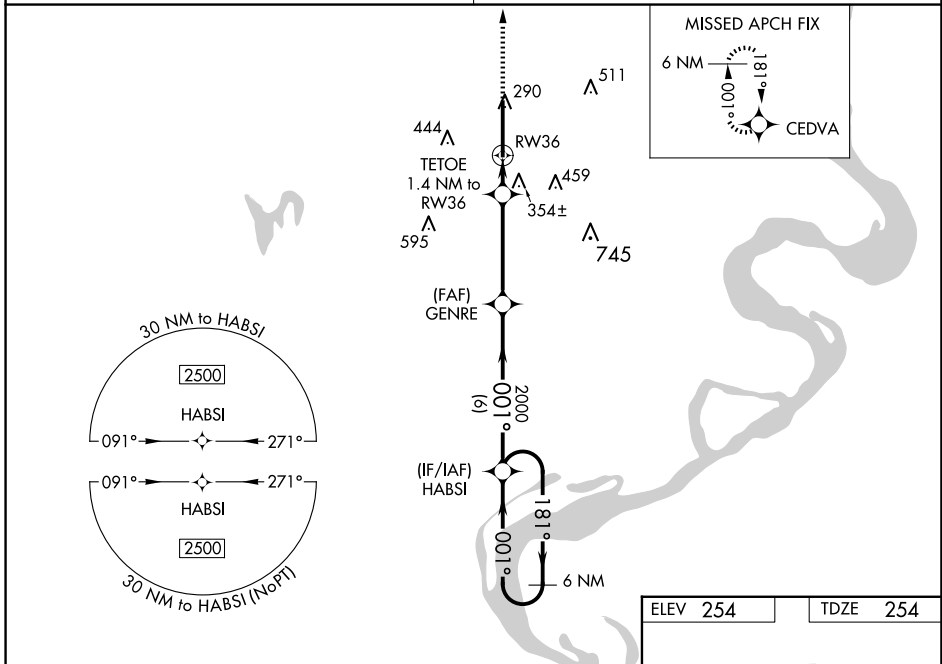
# RNAV (GPS) RWY 36

ARKANSAS INTL (BYH)

**⚠** Inop table does not apply. Baro-VNAV NA when using Blytheville Muni altimeter setting. For uncompensated Baro-VNAV systems, LNAV/VNAV NA below -1.5°C (5°F) or above 54°C (130°F). Circling NA east of Rwy 18-36. DME/DME RNP-0.3 NA. Obtain local altimeter setting on CTAF; when not received, use Blytheville Muni altimeter setting and increase all DA 14 feet and all MDA 20 feet. Increase LNAV/VNAV all Cats and LNAV Cat C/D visibility  $\frac{1}{8}$  mile.

MISSED APPROACH: Climb to 2500 direct CEDVA and hold.

MEMPHIS CENTER <b>134.65 316.15</b>	UNICOM <b>122.7 (CTAF) 0</b>
--	---------------------------------



CATEGORY	A	B	C	D
LPV DA		454- $\frac{3}{4}$	200 (200- $\frac{3}{4}$ )	
LNAV/VNAV DA		537-1	283 (300-1)	
LNAV MDA		620-1	366 (400-1)	
<b>C</b> CIRCLING	700-1 446 (500-1)	720-1 466 (500-1)	800-1 $\frac{1}{2}$ 546 (600-1 $\frac{1}{2}$ )	820-2 566 (600-2)

SC-1, 23 JAN 2025 to 20 FEB 2025

SC-1, 23 JAN 2025 to 20 FEB 2025