

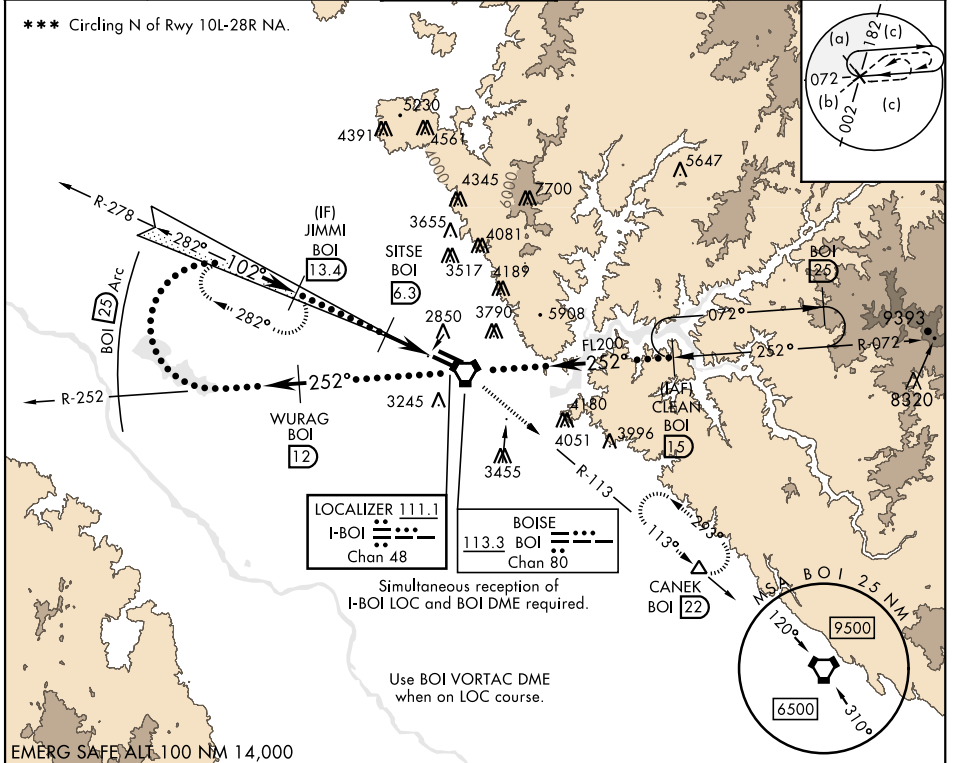
BOISE, IDAHO

HI-ILS Z or LOC Z RWY 10R

LOC I-BOI 111.1	APCH CRS 102°	Rwy Ldg TDZE Arprt Elev 9763 2836 2872	AL-57 [USAF]	BOISE AIR TERMINAL (GOWEN FLD)	(KBOI)
---------------------------	-------------------------	--	--------------	--------------------------------	--------

DME required.	ALSIF-2	MISSED APPROACH: Climb to 7300 on BOI VORTAC R-113 to CANEK/BOI 22 DME and hold.
---------------	---------	--

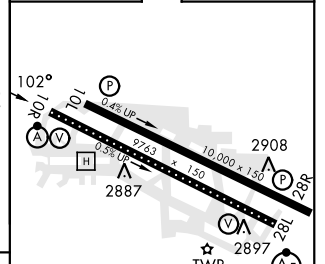
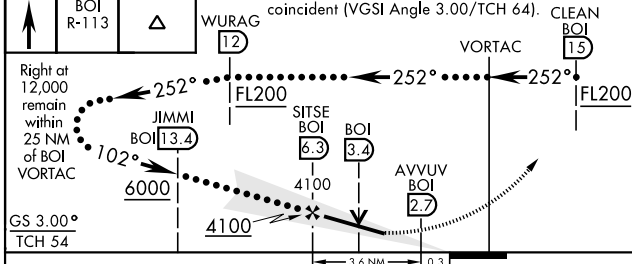
ATIS 123.9 290.4	BIG SKY APP CON 119.6 269.4	BOISE TOWER 118.1 257.8	GND CON 121.7 348.6	CLNC DEL 125.9 323.2	ASOS
----------------------------	---------------------------------------	-----------------------------------	-------------------------------	--------------------------------	------



NW-1, 23 JAN 2025 to 20 FEB 2025

NW-1, 23 JAN 2025 to 20 FEB 2025

7300	BOI R-113	CANEK	WURAG BOI 12	VGSI and ILS glidepath not coincident (VGSI Angle 3.00/TCH 64).	CLEAN BOI 15	ELEV 2872	TDZE 2836
------	-----------	-------	--------------	---	--------------	-----------	-----------



CATEGORY	C	D	E
S-ILS 10R **	3036/18	200	(200-½)
S-LOC 10R **	3200/35	364	(400-¾)
***	3640-2¼ 768 (800-2¼)	3820-3 948 (1000-3)	3880-3 1008 (1100-3)
CIRCLING			

TDZL/CL Rwy 10R-28L
HIRL Rwys 10L-28R, 10R-28L
REIL Rwy 10L

BOISE, IDAHO 43°34'N-116°13'W BOISE AIR TERMINAL (GOWEN FLD) (KBOI)

Amtd 5A 29DEC22

HI-ILS Z or LOC Z RWY 10R