

LOC/DME I-AAD 110.15 Chan 38(Y)	APP CRS 282°	Rwy ldg 10000 TDZE 2871 Apt Elev 2871
--	------------------------	---

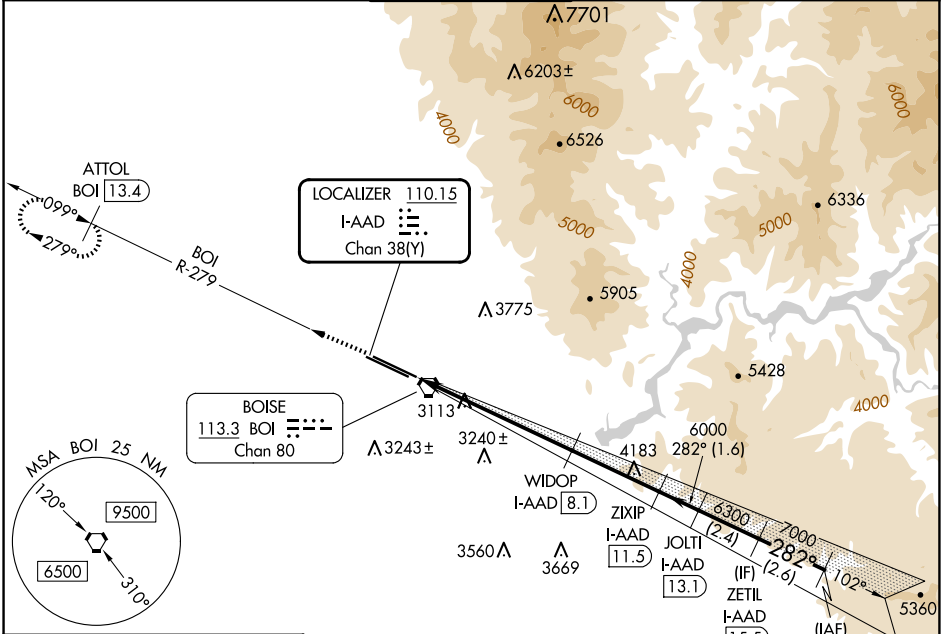
ILS or LOC RWY 28R

BOISE AIR TRML/GOWEN FLD (BOI)

⚠ Circling NA north of Rwy 10L-28R. DME required.

MISSED APPROACH: Climb to 6000 on BOI VORTAC R-279 to ATTOL/BOI 13.4 DME and hold.

D-ATIS 123.9 290.4	BIG SKY APP CON 119.6 269.4	BOISE TOWER 118.1 257.8	GND CON 121.7 348.6	CLNC DEL 125.9 323.2
------------------------------	---------------------------------------	-----------------------------------	-------------------------------	--------------------------------

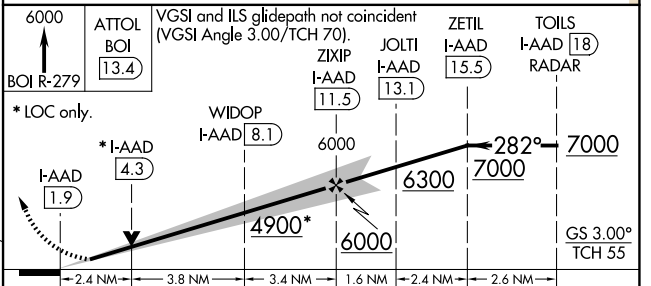
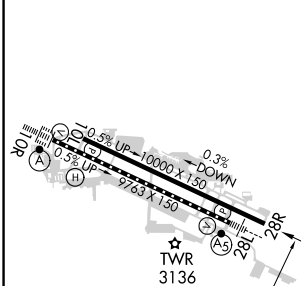


NW-1, 23 JAN 2025 to 20 FEB 2025

NW-1, 23 JAN 2025 to 20 FEB 2025

ELEV 2871	D TDZE 2871
-----------	--------------------

RADAR and DME REQUIRED



CATEGORY	A	B	C	D
S-ILS 28R	3121- ³ / ₄ 250 (300- ³ / ₄)			
S-LOC 28R	3700-1 829 (900-1)	3700-1 ¹ / ₄ 829 (900-1 ¹ / ₄)	3700-2 ¹ / ₂ 829 (900-2 ¹ / ₂)	829 (900-2 ¹ / ₂)
C CIRCLING	3700-1 ¹ / ₄ 829 (900-1 ¹ / ₄)	3740-2 ¹ / ₂ 869 (900-2 ¹ / ₂)	3820-3 949 (1000-3)	