

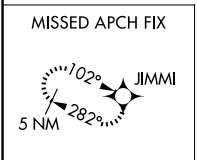
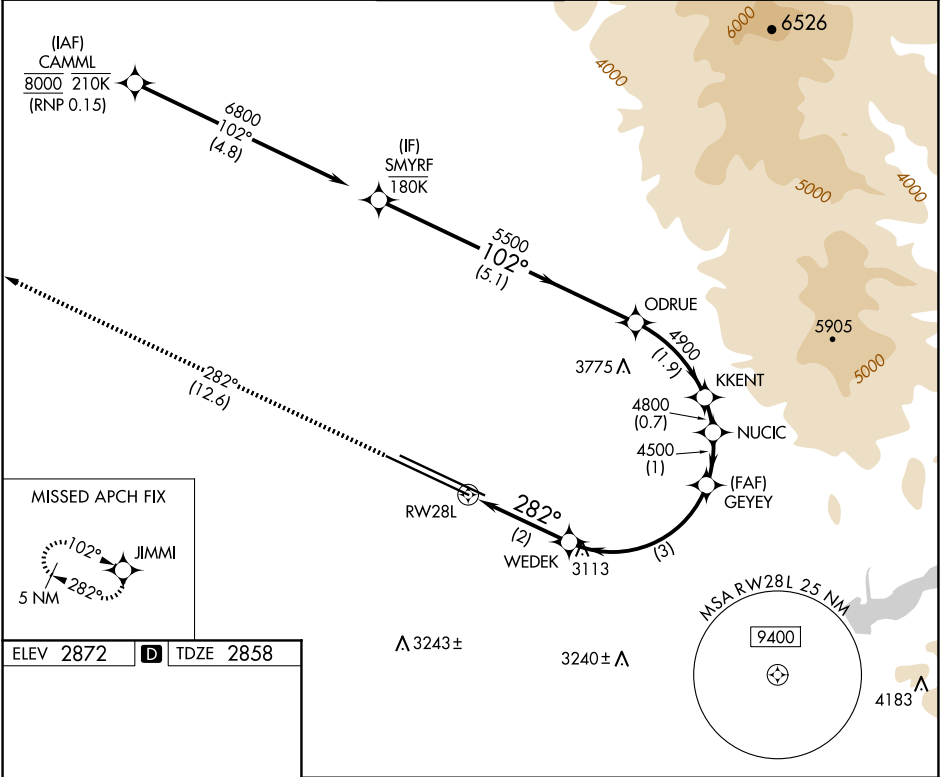
APP CRS	Rwy Idg	9763
282°	TDZE	2858
	Apt Elev	2872

RNAV (RNP) X RWY 28L

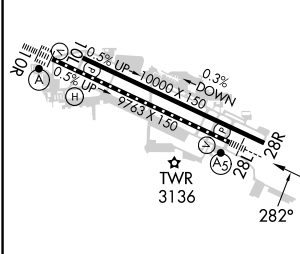
BOISE AIR TRML/GOWEN FLD (BOI)

RNP AR APCH - GPS.	MALSR	MISSED APPROACH: Climb to 6000 on track 282° to JIMMI and hold, continue climb-in-hold to 6000.
▼ For uncompensated Baro-VNAV systems, procedure NA below -14°C or above 54°C.		

D-ATIS 123.9 290.4	BIG SKY APP CON 119.6 269.4	BOISE TOWER 118.1 257.8	GND CON 121.7 348.6	CLNC DEL 125.9 323.2
------------------------------	---------------------------------------	-----------------------------------	-------------------------------	--------------------------------



ELEV 2872	D	TDZE 2858
-----------	----------	-----------



6000	JIMMI	VGSi and RNAV glidepath not coincident (VGSi Angle 3.00/TCH 50).				SMYRF
tr 282°		WEDEK	GYEY	NUCIC	KKENT	ODRUE
		3545	4500	4800	4900	5500
		2 NM	3 NM	1 NM	0.7 NM	1.9 NM
						5.1 NM
						6800
						GP 3.00°
						TCH 50

CATEGORY	A	B	C	D
RNP 0.15 DA	3229/35 371 (400- $\frac{1}{2}$)			

AUTHORIZATION REQUIRED

NW-1, 23 JAN 2025 to 20 FEB 2025

NW-1, 23 JAN 2025 to 20 FEB 2025