

APP CRS 282°	Rwy Idg 10000
	TDZE 2872
	Apt Elev 2872

RNAV (RNP) Z RWY 28R

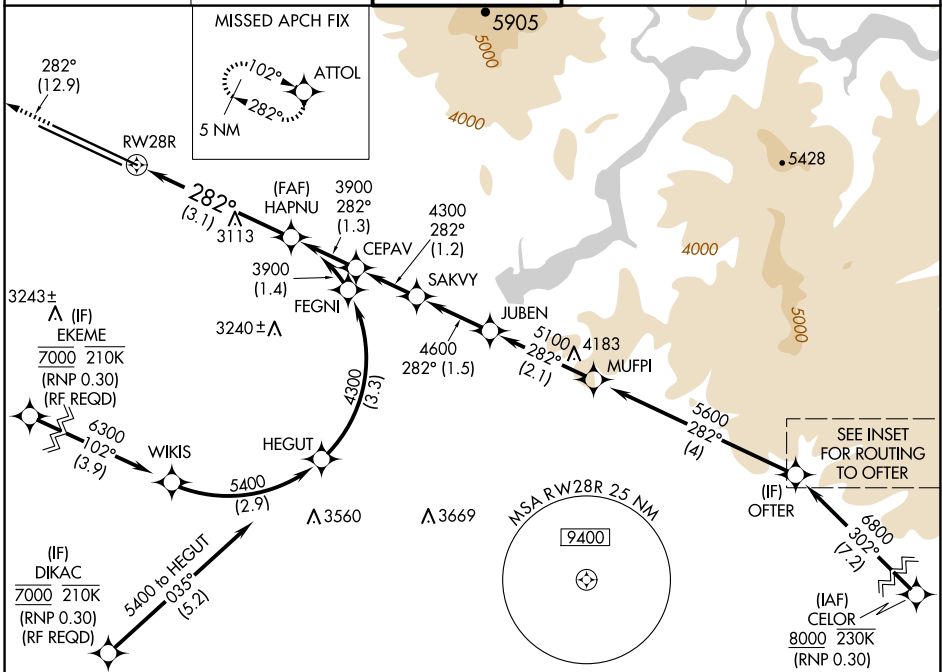
BOISE AIR TRML/GOWEN FLD (BOI)

RNP AR APCH.

▼ For uncompensated Baro-VNAV systems, procedure NA below -1.5°C or above 54°C.

MISSED APPROACH: Climb to 6000 on track 282° to ATTOL and hold, continue climb-in-hold to 6000.

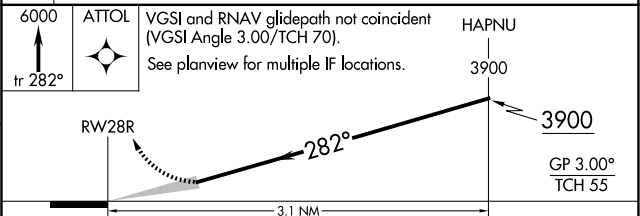
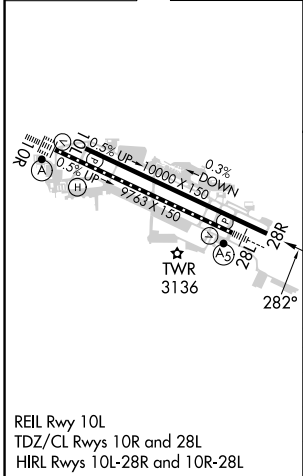
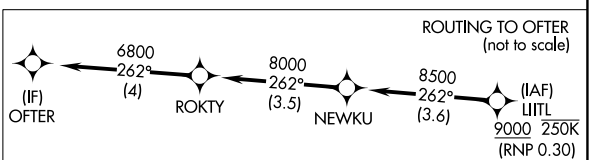
D-ATIS 123.9 290.4	BIG SKY APP CON 119.6 269.4	BOISE TOWER 118.1 257.8	GND CON 121.7 348.6	CLNC DEL 125.9 323.2
------------------------------	---------------------------------------	-----------------------------------	-------------------------------	--------------------------------



NW-1, 23 JAN 2025 to 20 FEB 2025

NW-1, 23 JAN 2025 to 20 FEB 2025

ELEV 2872	D	TDZE 2872
------------------	----------	------------------



CATEGORY	A	B	C	D
RNP 0.15 DA		3204-1	332 (400-1)	
RNP 0.30 DA		3303-1¼	431 (500-1¼)	

AUTHORIZATION REQUIRED

BOISE, IDAHO
Amdt 2 10SEP20

BOISE AIR TRML/GOWEN FLD (BOI)
43°34'N-116°13'W
RNAV (RNP) Z RWY 28R