

WAAS CH 65803 W28B	APP CRS 282°	Rwy Idg 10000 TDZE 2871 Apt Elev 2871
--	------------------------	--

RNAV (GPS) Y RWY 28R

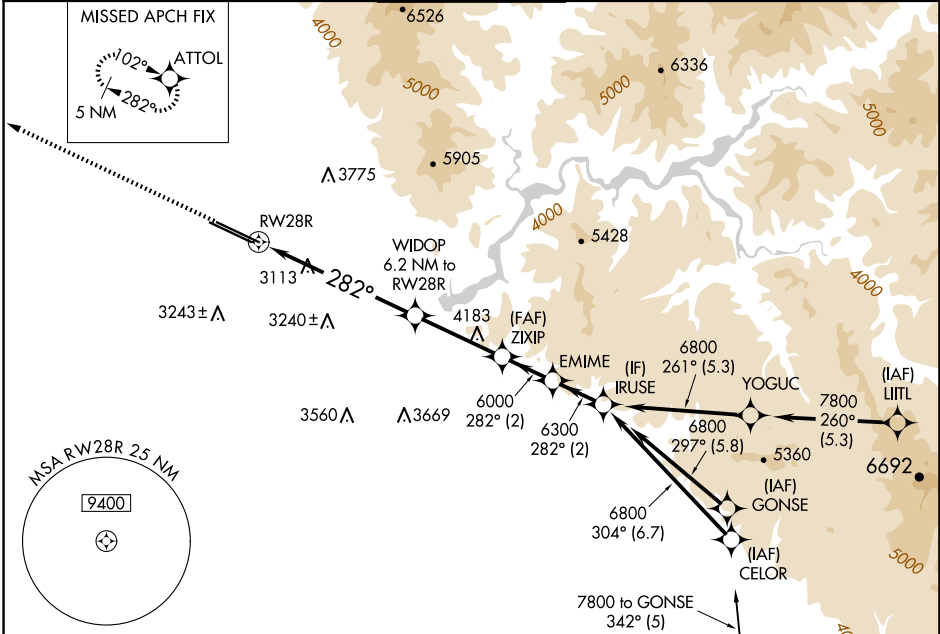
BOISE AIR TRML/GOWEN FLD (BOI)



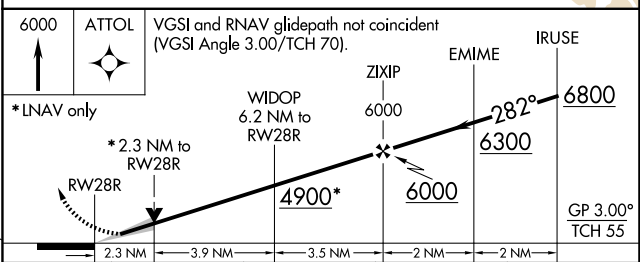
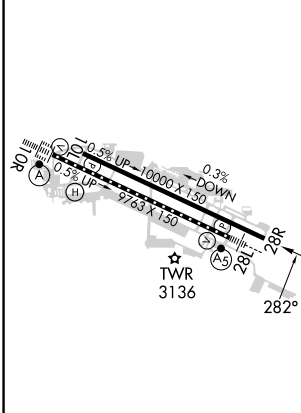
For uncompensated Baro-VNAV systems, LNAV/VNAV NA below -12°C (11°F) or above 52°C (126°F).
Circling NA north of Rwy 10L-28R. DME/DME RNP-0.3 NA.

MISSED APPROACH: Climb to 6000 direct ATTOL and hold, continue climb-in-hold to 6000.

D-ATIS 123.9 290.4	BIG SKY APP CON 119.6 269.4	BOISE TOWER 118.1 257.8	GND CON 121.7 348.6	CLNC DEL 125.9 323.2
------------------------------	---------------------------------------	--	-------------------------------	--------------------------------



ELEV 2871	D TDZE 2871
-----------	--------------------



	A	B	C	D
LPV DA		3121-3/4	250 (300-3/4)	
LNAV/VNAV DA		3199-1	328 (400-1)	
LNAV MDA	3660-1 1/4	789 (800-1 1/4)	3660-2 1/2	789 (800-2 1/2)
C CIRCLING	3660-1 1/4	789 (800-1 1/4)	3740-2 1/2 869 (900-2 1/2)	3820-3 949 (1000-3)

REIL Rwy 10L
TDZ/CL Rwys 10R and 28L
HIRL Rwys 10L-28R and 10R-28L

NW-1, 23 JAN 2025 to 20 FEB 2025

NW-1, 23 JAN 2025 to 20 FEB 2025