

CELTK SEVEN DEPARTURE (RNAV)

AL-58 (FAA)

BOSTON, MASSACHUSETTS

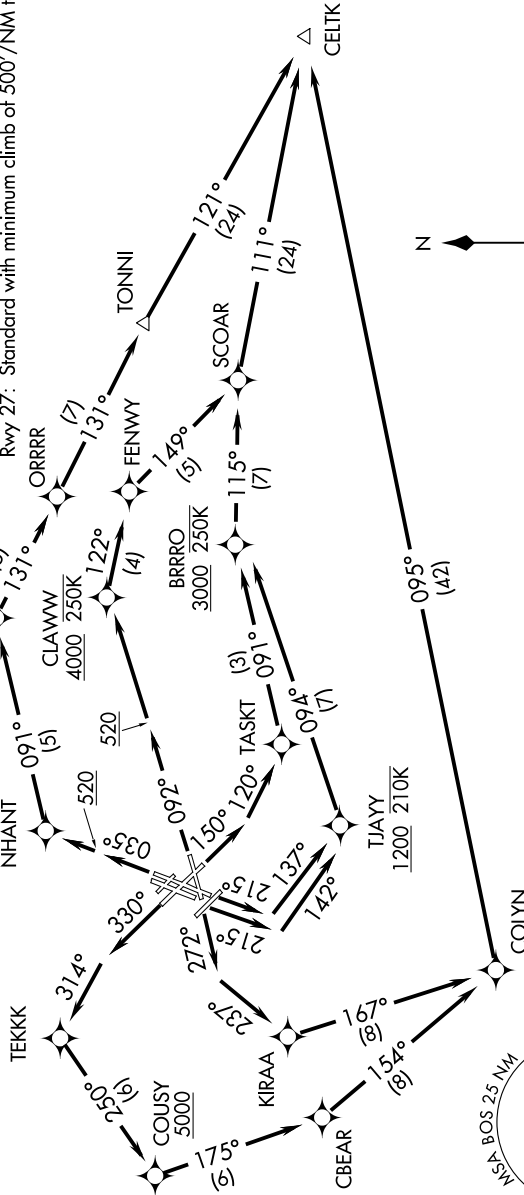
TOP ALTITUDE:  
5000

**TAKEOFF MINIMUMS:**  
 Rwy 4L, 14, 15L, 32, 33R: NA-ATC.  
 Rwy 4R, 9, 15R, 22R, 33L: Standard with minimum climb of 500'/NM to 520.  
 Rwy 22L: 300-1 with minimum climb of 500'/NM to 520, if tower reports no tall vessels in the departure area.  
 Rwy 27: Standard with minimum climb of 500'/NM to 1300.

NE-1, 23 JAN 2025 to 20 FEB 2025

RNAV 1 - DME/DME/IRU or GPS.  
 RADAR required for non-GPS equipped aircraft.

BOSTON DEP CON  
 133.0  
 D-ATIS 135.0  
 CLNC DEL  
 121.65 257.8  
 CPDLC  
 GND CON  
 121.75 121.9  
 BOSTON TOWER  
 128.8 257.8 (WEST)  
 132.225 257.8 (EAST)



NOTE: Jet aircraft only.

NOTE: Chart not to scale.

(NARRATIVE ON FOLLOWING PAGE)

NE-1, 23 JAN 2025 to 20 FEB 2025

CELTK SEVEN DEPARTURE (RNAV)