

LOC/DME I-BOS 110.3 Chan 40	APP CRS 035°	Rwy Idg 8851 TDZE 18 Apt Elev 19
-------------------------------------------------	------------------------	-------------------------------------------------------------

ILS RWY 4R (SA CAT I)

GENERAL EDWARD LAWRENCE LOGAN INTL (BOS)

RNP APCH - GPS. From GOSHI.
DME required.

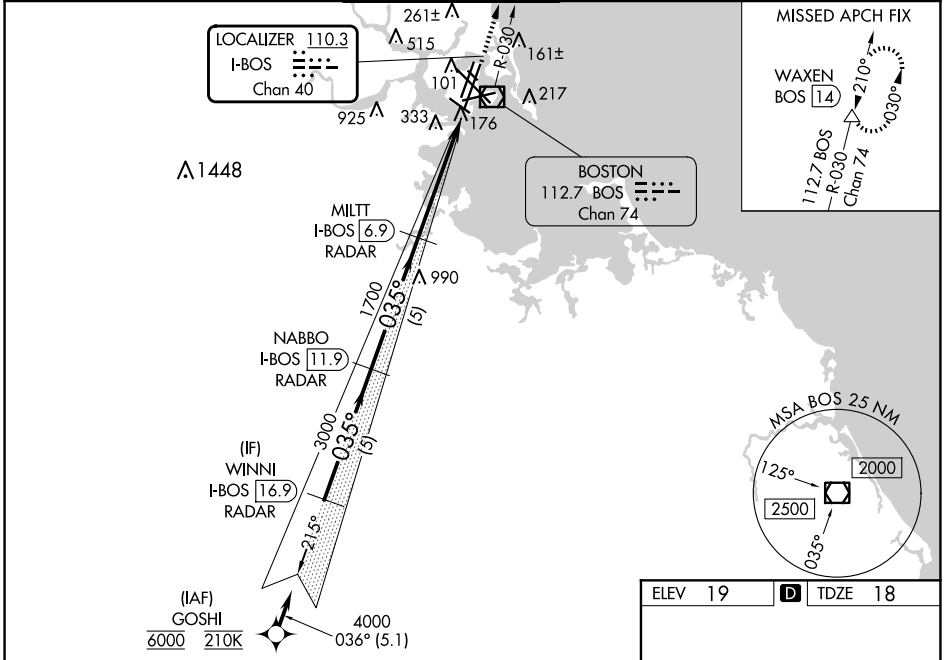
ALSF-2



MISSED APPROACH: Climb to 3000 on BOS VOR/DME R-030 to WAXEN/BOS 14 DME and hold.

When control tower reports tall vessels in approach area, procedure NA. Requires specific OPSPEC, MSPEC, or LOA approval. Simultaneous approach authorized. Simultaneous operations require use of vertical guidance; maintain last assigned altitude until established on glideslope.

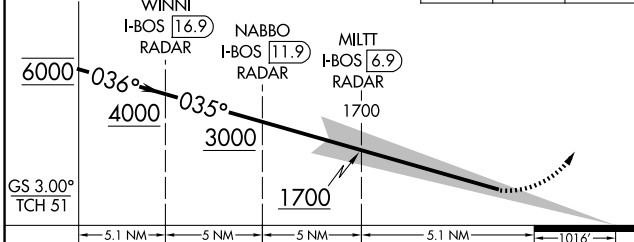
D-ATIS 135.0	BOSTON APP CON 120.6 263.1	BOSTON TOWER 128.8 257.8 (WEST) 132.225 257.8 (EAST)	GND CON 121.75 121.9	CLNC DEL 121.65 257.8	CPDLC
------------------------	--------------------------------------	--------------------------------------------------------------------------	--------------------------------	---------------------------------	-------



NE-1, 23 JAN 2025 to 20 FEB 2025

NE-1, 23 JAN 2025 to 20 FEB 2025

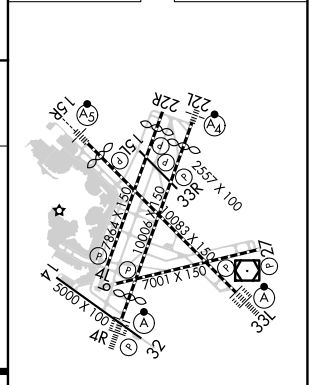
VGSI and ILS glidepath not coincident (VGSI Angle 3.00/TCH 67).	3000	BOS R-030	WAXEN
-----------------------------------------------------------------	------	-----------	-------



CATEGORY	A	B	C	D
S-ILS 4R	RA 168/14		150 DA 168	

SA CATEGORY I ILS - SPECIAL AIRCREW & AIRCRAFT CERTIFICATION REQUIRED

ELEV 19	TDZE 18
---------	---------



TDZ/CL Rwy's
4R, 15R and 33L
REIL Rwy's 4L, 27 and 32
MIRL Rwy 15L-33R
HIRL Rwy's 4L-22R, 4R-22L,
9-27, 14-32 and 15R-33L