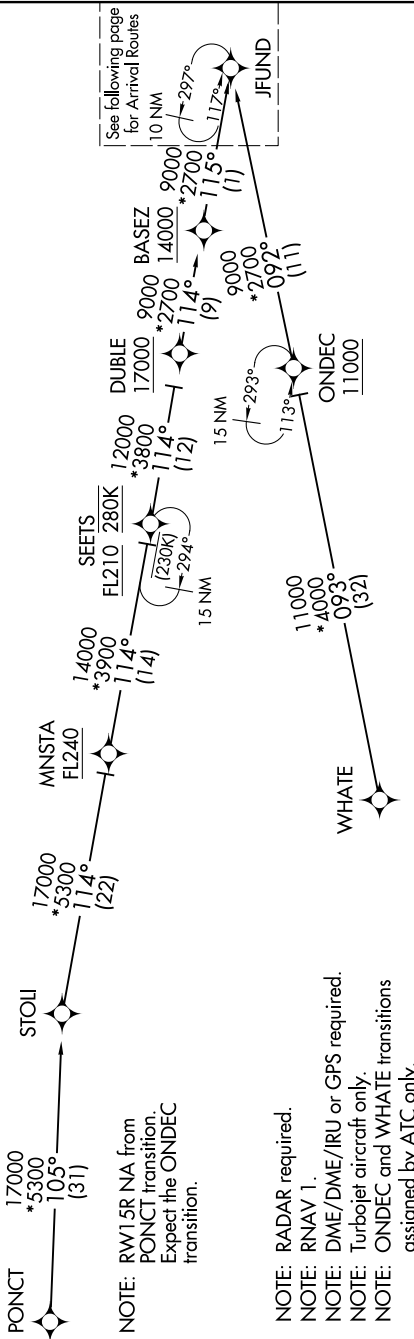


JFUND TWO ARRIVAL(RNAV) Transition Routes

NE-1, 23 JAN 2025 to 20 FEB 2025

D-ATIS
135.0
BOSTON APP CON
120.6 263.1



See following page
for Arrival Routes

NOTE: RW15R NA from
PUNCT transition.
Expect the ONDEC
transition.

NOTE: RADAR required.
NOTE: RNAV 1.
NOTE: DME/DME/IRU or GPS required.
NOTE: Turbojet aircraft only.
NOTE: ONDEC and WHATE transitions
assigned by ATC only.



ONDEC TRANSITION [ONDEC.JFUND2]:
PUNCT TRANSITION [PUNCT.JFUND2]
WHATE TRANSITION [WHATE.JFUND2]:

NOTE: Not to scale. (CONTINUED ON FOLLOWING PAGE)

JFUND TWO ARRIVAL(RNAV) Transition Routes

NE-1, 23 JAN 2025 to 20 FEB 2025