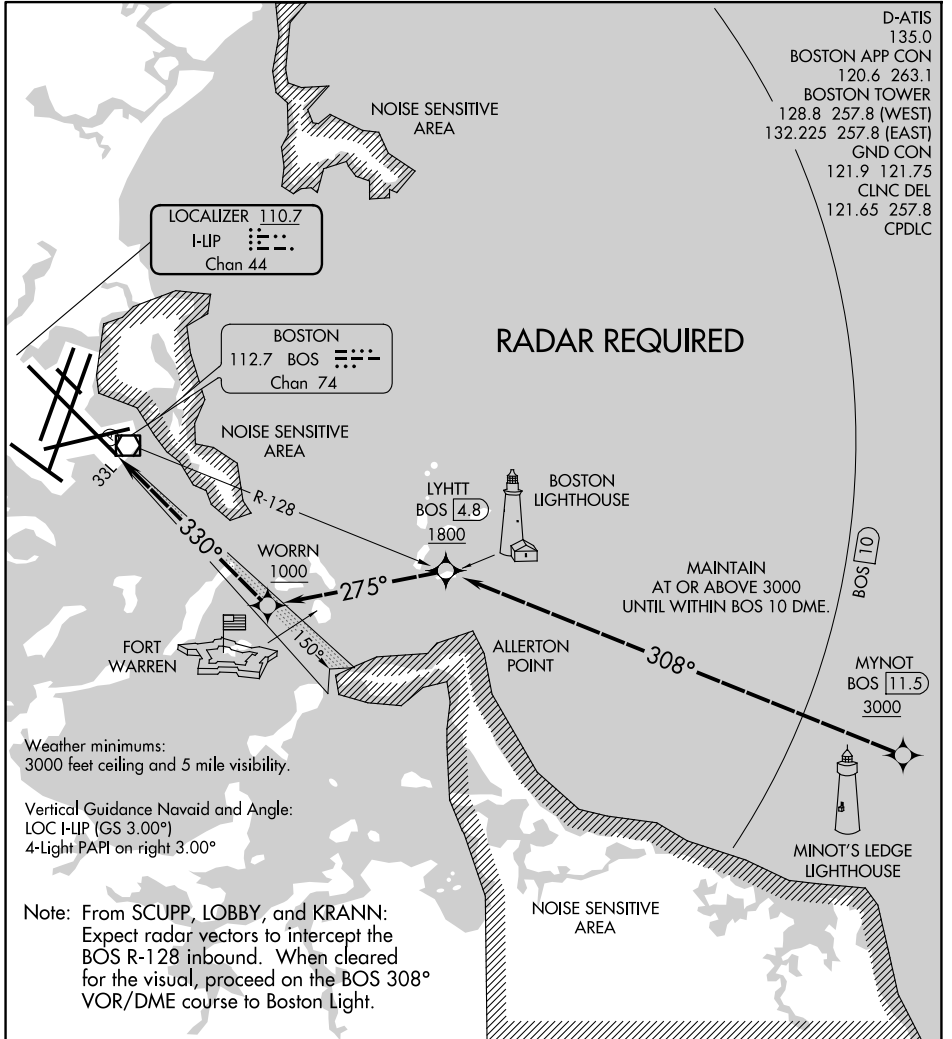


# LIGHT VISUAL RWY 33L

GENERAL EDWARD LAWRENCE LOGAN INTL (BOS)  
AL-58 (FAA) BOSTON, MASSACHUSETTS



NE-1, 23 JAN 2025 to 20 FEB 2025

NE-1, 23 JAN 2025 to 20 FEB 2025

NM	1	2	3	4	5	6	7	8	9	10	11	
----	---	---	---	---	---	---	---	---	---	----	----	--

# LIGHT VISUAL RWY 33L

Amdt 1A 12OCT17

BOSTON, MASSACHUSETTS  
GENERAL EDWARD LAWRENCE LOGAN INTL (BOS)  
42°22'N-71°00'W