

PATSS SEVEN DEPARTURE (RNAV)

AL-58 (FAA)

BOSTON, MASSACHUSETTS

NE-1, 23 JAN 2025 to 20 FEB 2025

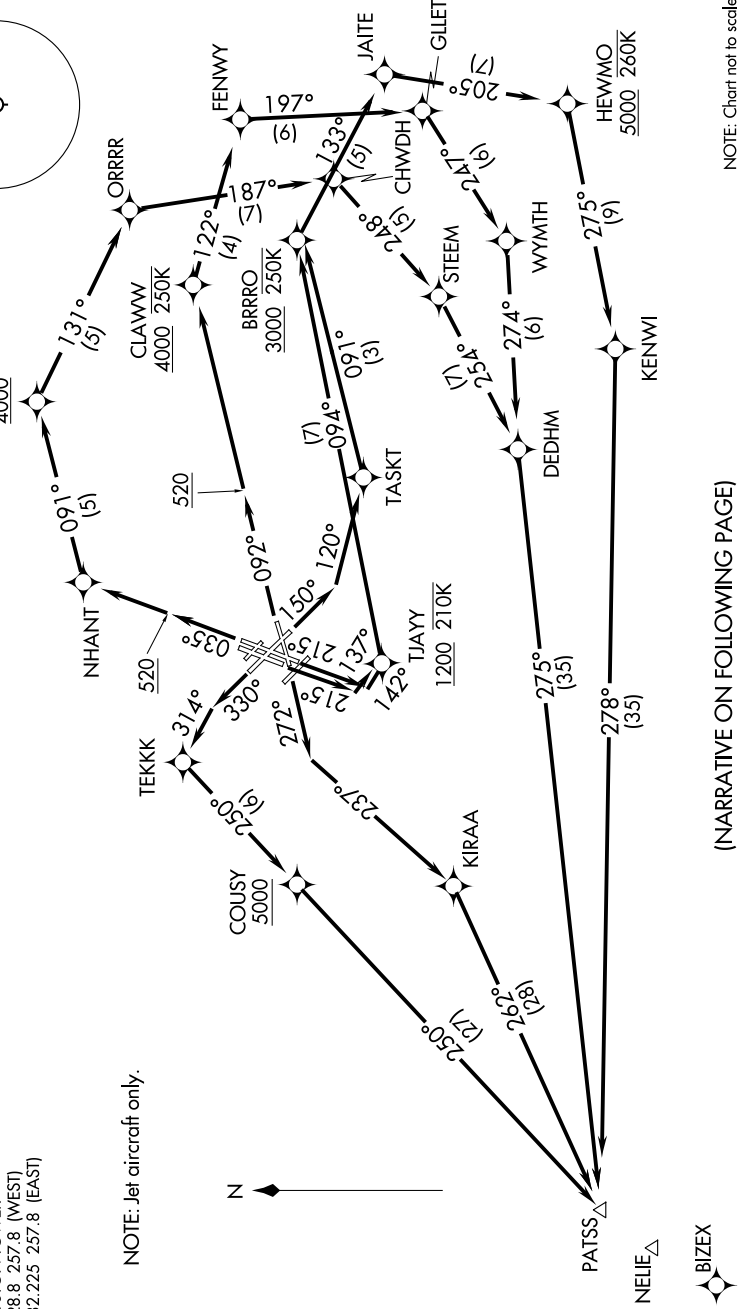
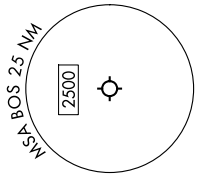
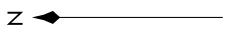
TOP ALTITUDE: 5000

RNAV 1 - DME/DME/IRU or GPS.
 RADAR required for non-GPS equipped aircraft.

TAKEOFF MINIMUMS:
 Rwy 4L, 14, 15L, 32, 33R: NA-ATC.
 Rwy 4R, 9, 15R, 22R, 33L: Standard with minimum climb of 500'/NM to 520.
 Rwy 22L: 300-1 with minimum climb of 500'/NM to 520, or standard with minimum climb of 500'/NM to 520, if tower reports no tall vessels in the departure area.
 Rwy 27: Standard with minimum climb of 500'/NM to 1300.

BOSTON DEP CON 133.0
 D-ATIS 135.0
 CLNC DEL 121.65 257.8
 CPDLC
 GND CON 121.75 121.9
 BOSTON TOWER 128.8 257.8 (WEST)
 132.225 257.8 (EAST)

NOTE: Jet aircraft only.



(NARRATIVE ON FOLLOWING PAGE)

NOTE: Chart not to scale.

NE-1, 23 JAN 2025 to 20 FEB 2025

PATSS SEVEN DEPARTURE (RNAV)

