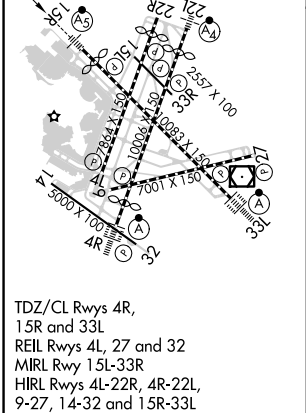
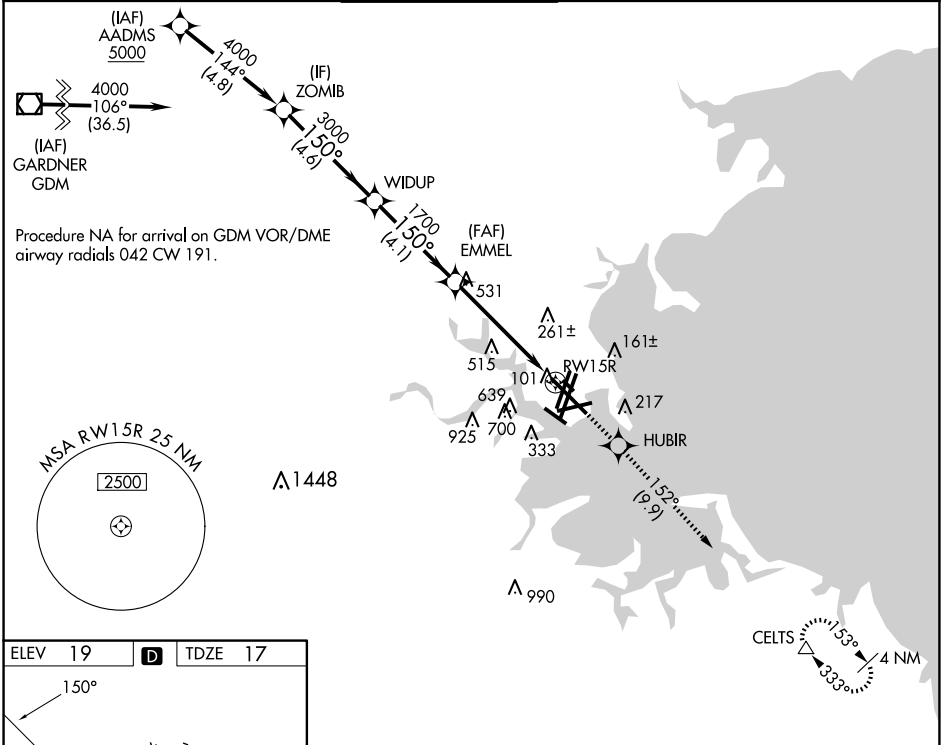


WAAS CH 42925 W15A	APP CRS 150°	Rwy ldg TDZE Apt Elev	9201 17 19
--	------------------------	-----------------------------	---------------------------------------

RNAV (GPS) RWY 15R

GENERAL EDWARD LAWRENCE LOGAN INTL (BOS)

RNP APCH - GPS.		MALSR		MISSED APPROACH: Climb to 3000 direct HUBIR and on track 152° to CELTS and hold.	
<p>▼ For uncompensated Baro-VNAV systems, LNAV/VNAV NA below -15°C or above 54°C. For inop ALS, increase LNAV Cats C and D visibility to 1 3/8 SM.</p>					
D-ATIS 135.0	BOSTON APP CON 120.6 263.1	BOSTON TOWER 128.8 257.8 (WEST) 132.225 257.8 (EAST)	GND CON 121.75 121.9	CLNC DEL 121.65 257.8	CPDLC



ELEV 19		D		TDZE 17	
<p>VGSI and RNAV glidepath not coincident (VGSI Angle 3.00/TCH 71).</p>					
ZOMB		WIDUP		EMMEL	
4000		3000		1700	
GP 3.00°		TCH 60		1.7 NM to RW15R	
4.6 NM		4.1 NM		3.5 NM	
CATEGORY A		CATEGORY B		CATEGORY C	
LPV DA		217/18		200 (200-1/2)	
LNAV/VNAV DA		567-1 1/8		550 (600-1 1/8)	
LNAV MDA		620/24		603 (700-1/2)	
				620-1 3/8	
				603 (700-1 3/8)	

NE-1, 23 JAN 2025 to 20 FEB 2025

NE-1, 23 JAN 2025 to 20 FEB 2025