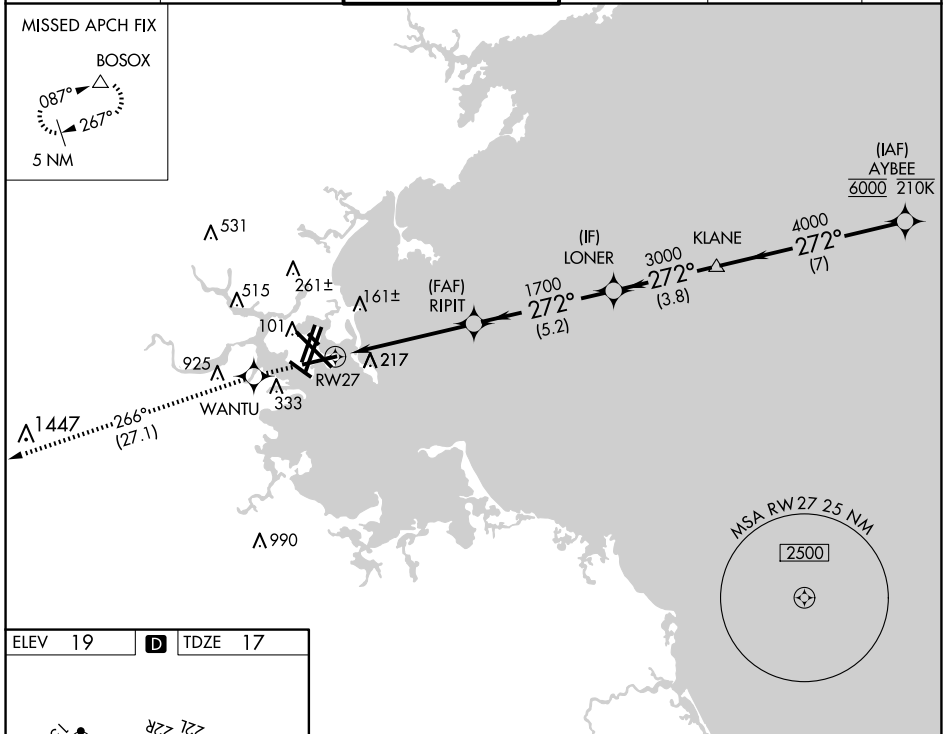


APP CRS	Rwy Idg	7001
272°	TDZE	17
	Apt Elev	19

RNAV (GPS) RWY 27

GENERAL EDWARD LAWRENCE LOGAN INTL (BOS)

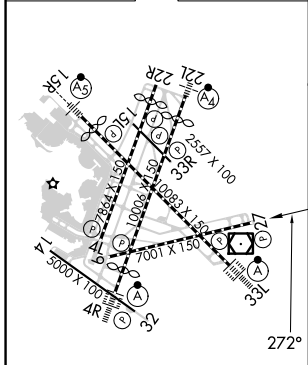
RNP APCH - GPS.			MISSED APPROACH: Climb to 3000 direct WANTU and on track 266° to BOSOX and hold.		
▼ For uncompensated Baro-VNAV systems, LNAV/VNAV NA below -15°C or above 54°C.					
D-ATIS	BOSTON APP CON	BOSTON TOWER	GND CON	CLNC DEL	CPDLC
135.0	120.6 263.1	128.8 257.8 (WEST) 132.225 257.8 (EAST)	121.75 121.9	121.65 257.8	



NE-1, 23 JAN 2025 to 20 FEB 2025

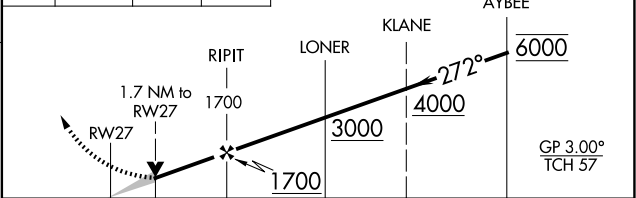
NE-1, 23 JAN 2025 to 20 FEB 2025

ELEV 19	D	TDZE 17
---------	----------	---------



TDZ/CL Rwy 4R, 15R and 33L
 REIL Rwy 4L, 27 and 32
 MIRL Rwy 15L-33R
 HIRL Rwy 4L-22R, 4R-22L, 9-27, 14-32 and 15R-33L

3000	WANTU	tr 266°	BOSOX	VGSI and RNAV glidepath not coincident (VGSI Angle 3.00/TCH 71).
------	-------	---------	-------	--



CATEGORY	A	B	C	D
LNAV/VNAV DA	510-1 $\frac{3}{8}$ 493 (500-1 $\frac{3}{8}$)			
LNAV MDA	640-1 $\frac{1}{2}$	623 (700-1 $\frac{1}{2}$)	640-1 $\frac{3}{8}$	623 (700-1 $\frac{3}{8}$)