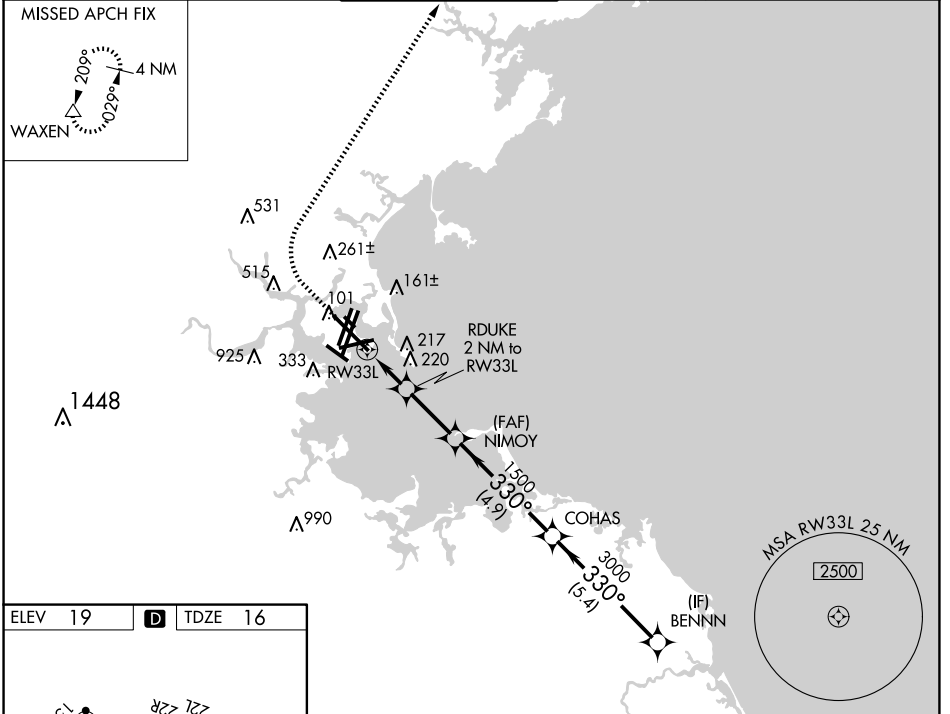


WAAS CH <b>69525</b> <b>W33A</b>	APP CRS <b>330°</b>	Rwy Idg TDZE <b>16</b> Apt Elev <b>19</b>	<b>10083</b>
----------------------------------------	------------------------	-------------------------------------------------	--------------

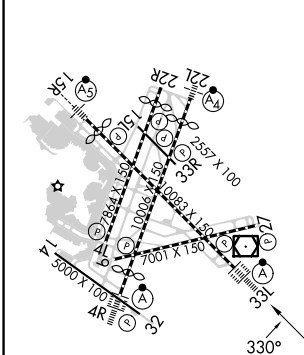
# RNAV (GPS) Z RWY 33L

GENERAL EDWARD LAWRENCE LOGAN INTL (BOS)

RNP APCH - GPS.		ALSIF-2		MISSED APPROACH: Climb to 600 then climbing right turn to 3000 direct WAXEN and hold.	
▼ For uncompensated Baro-VNAV systems, LNAV/VNAV NA below -14°C or above 54°C.					
D-ATIS <b>135.0</b>	BOSTON APP CON <b>120.6 263.1</b>	<b>BOSTON TOWER</b> <b>128.8 257.8 (WEST)</b> <b>132.225 257.8 (EAST)</b>	GND CON <b>121.75 121.9</b>	CLNC DEL <b>121.65 257.8</b>	CPDLC

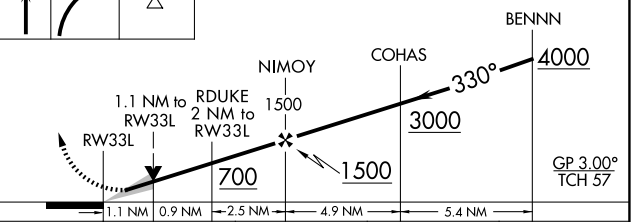


ELEV 19	<b>D</b>	TDZE 16
---------	----------	---------



TDZ/CL Rws 4R, 15R and 33L  
REIL Rws 4L, 27 and 32  
MIRL Rwy 15L-33R  
HIRL Rws 4L-22R, 4R-22L, 9-27, 14-32 and 15R-33L

600 3000 WAXEN VGSI and RNAV glidepath not coincident (VGSI Angle 3.00/TCH 68).



CATEGORY	A	B	C	D
LPV DA		216/18	200 (200-½)	
LNAV/VNAV DA		324/24	308 (400-½)	
LNAV MDA	440/24	424 (500-½)	440/40	424 (500-¾)

NE-1, 23 JAN 2025 to 20 FEB 2025

NE-1, 23 JAN 2025 to 20 FEB 2025