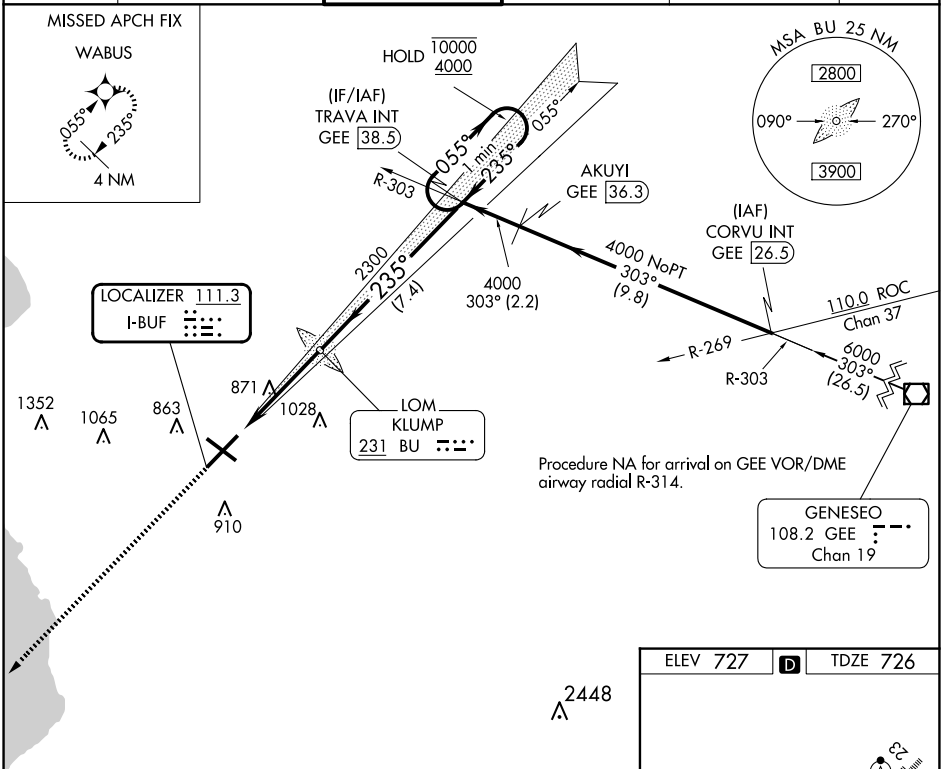


LOC I-BUF <b>111.3</b>	APP CRS <b>235°</b>	Rwy Idg TDZE Apt Elev <b>7569</b> <b>726</b> <b>727</b>
---------------------------	------------------------	--

# ILS RWY 23 (SA CAT I)

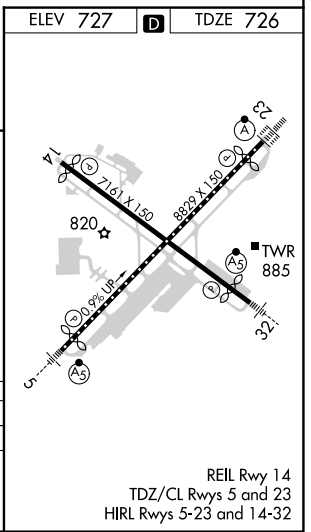
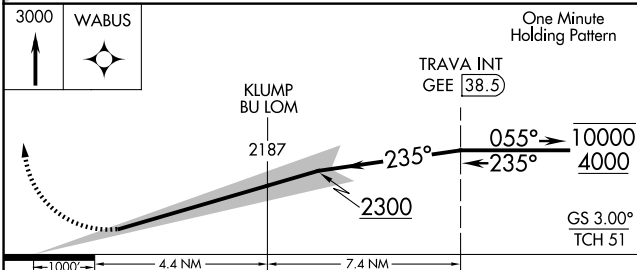
BUFFALO NIAGARA INTL (BUF)

DME required. RNP APCH - GPS.		ALSIF-2		MISSED APPROACH: Climb to 3000 direct WABUS and hold.	
Requires specific OPSPEC, MSPEC, or LOA approval.		ALSIF-2		MISSED APPROACH: Climb to 3000 direct WABUS and hold.	
D-ATIS <b>135.35</b>	BUFFALO APP CON <b>126.15 263.125</b>	BUFFALO TOWER <b>120.5 257.8</b>	GND CON <b>133.2 257.8</b>	CLNC DEL <b>124.7 257.8</b>	CPDLC



NE-2, 23 JAN 2025 to 20 FEB 2025

NE-2, 23 JAN 2025 to 20 FEB 2025



CATEGORY	A	B	C	D
S-ILS 23	RA 194/14		154 DA 880	

**SA CATEGORY I ILS- SPECIAL AIRCREW & AIRCRAFT CERTIFICATION REQUIRED**

REIL Rwy 14  
TDZ/CL Rws 5 and 23  
HIRL Rws 5-23 and 14-32