

BAGGY THREE ARRIVAL (RNAV)

CHARLESTON, SOUTH CAROLINA

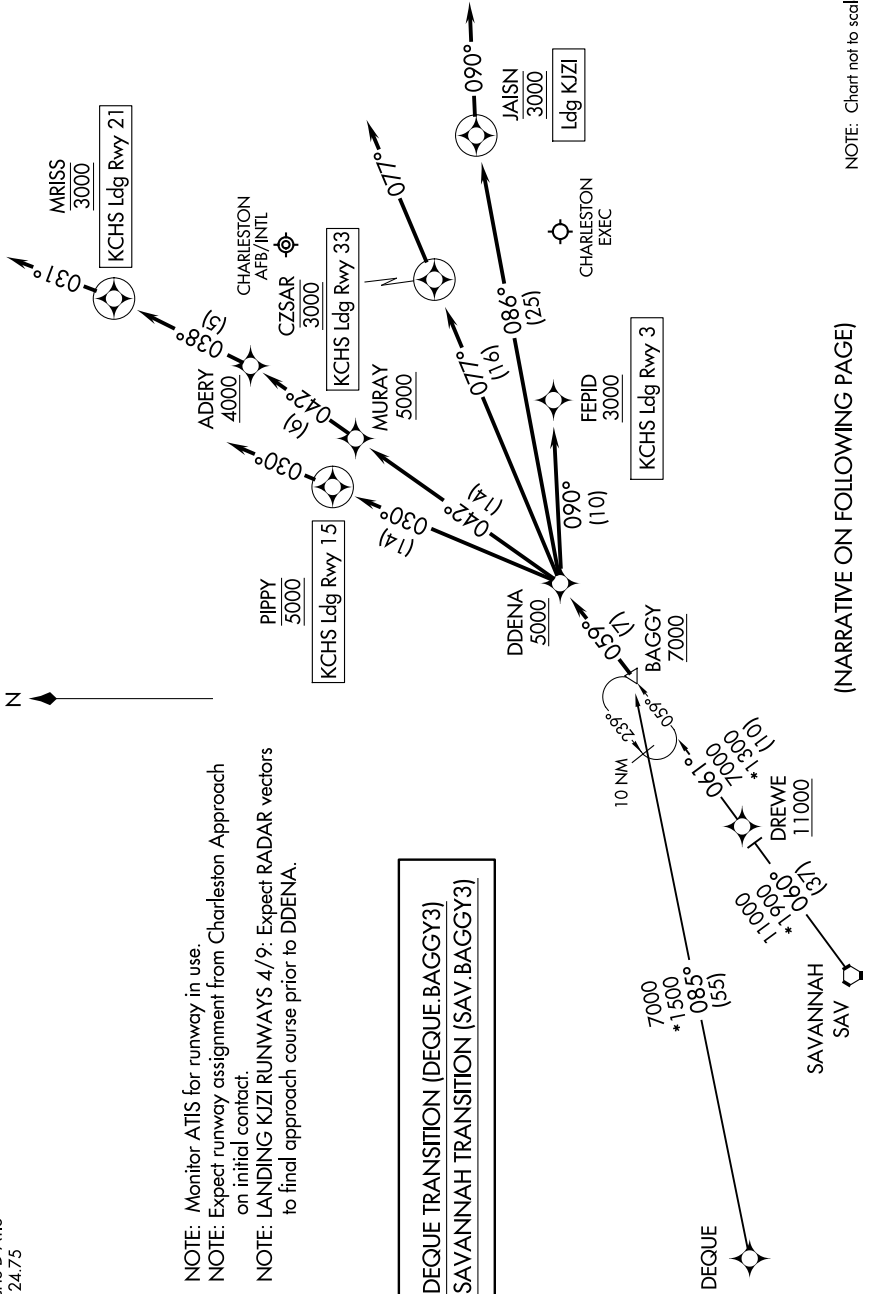
SE-2, 23 JAN 2025 to 20 FEB 2025

CHARLESTON APP CON
120.7 306.925
CHS D-ATIS
124.75

NOTE: Monitor ATIS for runway in use.
NOTE: Expect runway assignment from Charleston Approach on initial contact.
NOTE: LANDING KJZI RUNWAYS 4/9: Expect RADAR vectors to final approach course prior to DDENA.

DEQUE TRANSITION (DEQUE.BAGGY3)
SAVANNAH TRANSITION (SAV.BAGGY3)

RNAV 1 - DME/DME/IRU or GPS.
RADAR required.



NOTE: Chart not to scale.

(NARRATIVE ON FOLLOWING PAGE)

SE-2, 23 JAN 2025 to 20 FEB 2025

BAGGY THREE ARRIVAL (RNAV)

CHARLESTON, SOUTH CAROLINA