

CLEVELAND, OHIO

AL-84 (FAA)

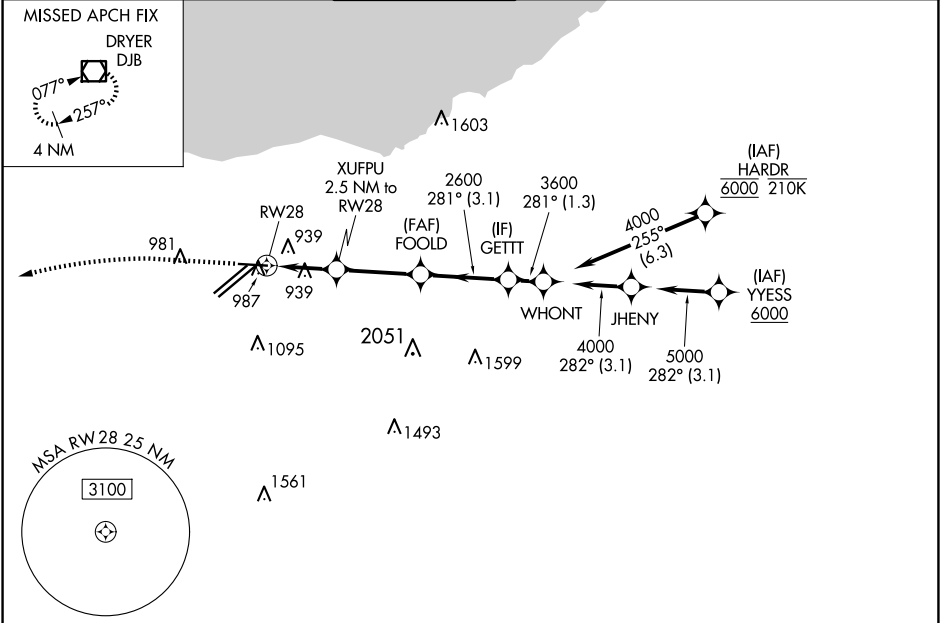
24305

WAAS CH <b>40109</b> <b>W28A</b>	APP CRS <b>281°</b>	Rwy Idg <b>6018</b> TDZE <b>799</b> Apt Elev <b>799</b>
--	------------------------	---

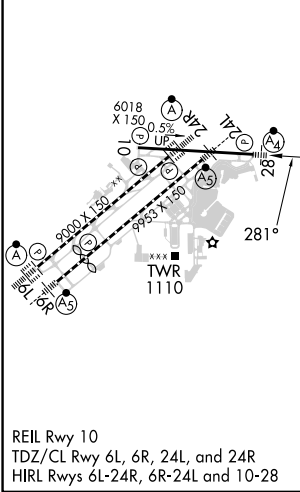
# RNAV (GPS) RWY 28

CLEVELAND-HOPKINS INTL (CLE)

<b>RNP APCH.</b> ▼ For uncompensated Baro-VNAV systems, LNAV/VNAV NA below -18°C (0°F) or above 54°C (130°F). Circling Rwy 10 NA at night. Inop table does not apply to LPV.		<b>MALSF</b> 	<b>MISSED APPROACH:</b> Climb to 1400 then climbing left turn to 3000 direct DJB VOR/DME and hold.		
<b>D-ATIS</b> ARR <b>127.85</b> DEP <b>132.375</b>	<b>CLEVELAND APP CON</b> <b>126.55 346.325</b>	<b>CLEVELAND TOWER</b> <b>124.5 273.45</b>	<b>GND CON</b> <b>121.7 273.45</b>	<b>CLNC DEL</b> <b>125.05 273.45</b>	<b>CPDLC</b>



ELEV 799	<b>D</b>	TDZE 799
----------	----------	----------



1400	3000	DJB		
*LNAV only.				
RWY28 *1.3 NM to RWY28		XUFPU 2.5 NM to RWY28	FOOLD 2600	GETT 3600
GP 3.00° TCH 46				
1.3 NM		1.2 NM	3 NM	3.1 NM
<b>CATEGORY</b>	<b>A</b>	<b>B</b>	<b>C</b>	<b>D</b>
<b>LPV DA</b>	999/40		200 (200-¾)	
<b>LNAV/VNAV DA</b>	1168/40		369 (400-¾)	
<b>LNAV MDA</b>	1260/40	461 (500-¾)	1260/60	461 (500-1¼)
<b>CIRCLING</b>	1420-1	621 (700-1)	1420-1¾ 621 (700-1¾)	1420-2 621 (700-2)

CLEVELAND, OHIO  
Amdt 3 24MAY18

41°25'N-81°51'W

# CLEVELAND-HOPKINS INTL (CLE) RNAV (GPS) RWY 28

EC-2, 23 JAN 2025 to 20 FEB 2025

EC-2, 23 JAN 2025 to 20 FEB 2025