

LOC/DME I-LPI <b>109.1</b> Chan 28	APP CRS <b>172°</b>	Rwy Idg <b>13500</b> TDZE <b>6187</b> Apt Elev <b>6187</b>
--	------------------------	--

# ILS or LOC RWY 17L

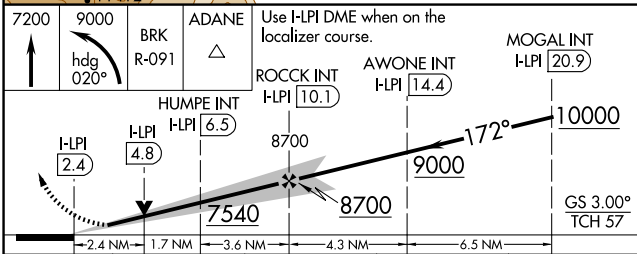
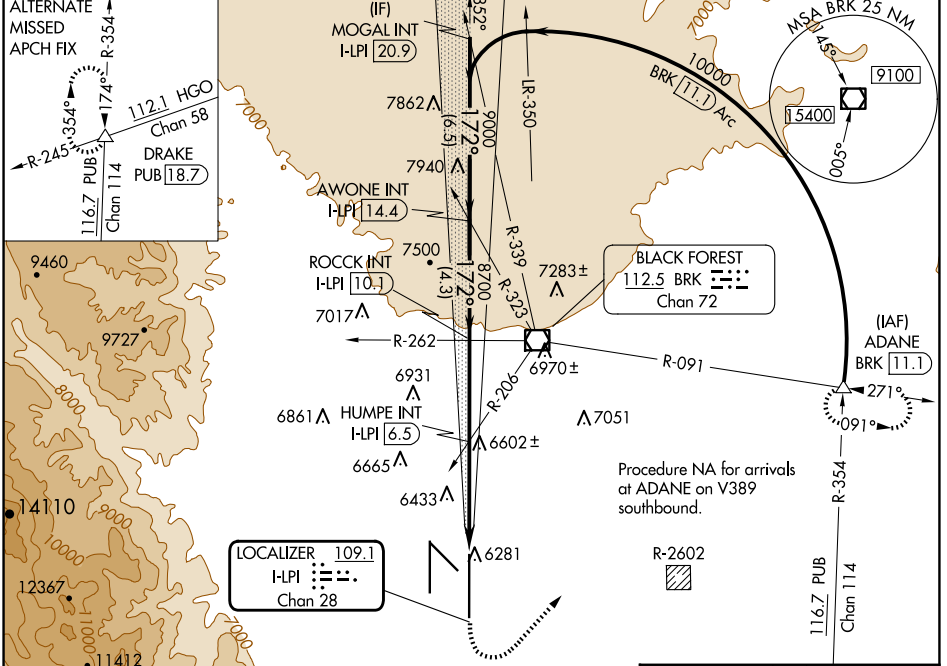
CITY OF COLORADO SPRINGS MUNI (COS)

DME or RADAR required for procedure entry.

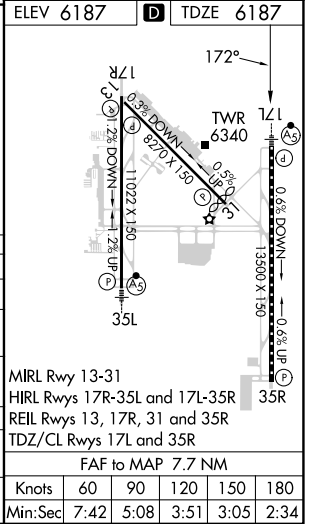
**MALS** MISSED APPROACH: Climb to 7200 then climbing left turn to 9000 on heading 020° and on BRK VOR/DME R-091 to ADANE INT/BRK VOR/DME 11.1 DME and hold.

Simultaneous approach authorized with Rwy 17R.

ATIS <b>125.0 254.3</b>	SPRINGS APP CON <b>124.0 257.875</b>	SPRINGS TOWER <b>119.9 360.6</b>	GND CON <b>121.7 348.6</b>	CLNC DEL <b>134.45 363.125</b>
----------------------------	---	-------------------------------------	-------------------------------	-----------------------------------



CATEGORY	A	B	C	D
S-ILS 17L	6387/18		200 (200-½)	
S-LOC 17L	7540/40 1353 (1400-¾)	7540/55 1353 (1400-1)	7540-3 1353 (1400-3)	
<b>C</b> CIRCLING	7540-1¼ 1353 (1400-1¼)	7540-1½ 1353 (1400-1½)	7540-3 1353 (1400-3)	
HUMPE FIX MINIMUMS (DUAL VOR RECEIVERS OR DME REQUIRED)				
S-LOC 17L	7020/24 833 (900-½)	7020/40 833 (900-¾)	7020-1⅞ 833 (900-1⅞)	
<b>C</b> CIRCLING	7020-1¼ 833 (900-1¼)		7040-2½ 853 (900-2½)	7260-3 1073 (1100-3)



SW-1, 23 JAN 2025 to 20 FEB 2025

SW-1, 23 JAN 2025 to 20 FEB 2025