

| | | | |
|---------------------------------|------------------------|-----------------------------|---|
| WAAS CH 82529 W03A | APP CRS 026° | Rwy Idg TDZE Apt Elev | 5465 1503 1503 |
|---------------------------------|------------------------|-----------------------------|---|

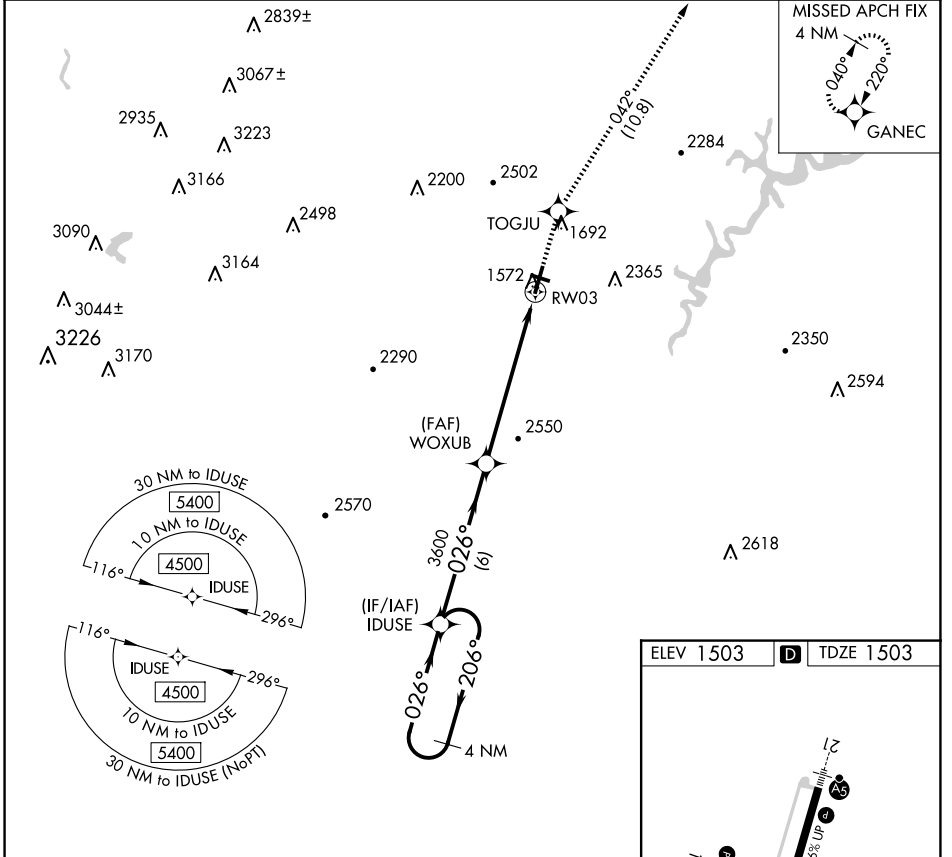
RNAV (GPS) Z RWY 3

ALTOONA/BLAIR COUNTY (A00)

⚠ Rwy 3 helicopter visibility reduction below 3/4 SM NA. DME/DME RNP-0.3 NA. When local altimeter setting not received, use Bedford County altimeter setting and increase all DA 84 feet, and increase all visibilities 3/8 mile.

MISSED APPROACH: Climb to 5000 direct TOGJU and on track 042° to GANEC and hold, continue climb-in-hold to 5000.

| | | |
|------------------------|---|-----------------------|
| ASOS 127.125 | JOHNSTOWN APP CON ★ 121.2 299.2 | CTAF 123.60 |
|------------------------|---|-----------------------|



NE-4, 23 JAN 2025 to 20 FEB 2025

NE-4, 23 JAN 2025 to 20 FEB 2025

| | | | | | |
|--|--------|--------|-------------|---------|-------|
| VGSI and RNAV glidepath not coincident (VGSI Angle 3.00/TCH 43). | | 5000 | TOGJU | tr 042° | GANEC |
| 4 NM Holding Pattern | IDUSE | | | | |
| 4500 | ← 206° | → 026° | → 026° | → 026° | |
| GP 3.00° | | | | | |
| TCH 55 | | | | | |
| | | 6 NM | 6.4 NM | | |
| CATEGORY | A | B | C | D | |
| LPV DA | | 1828-1 | 325 (400-1) | | |

