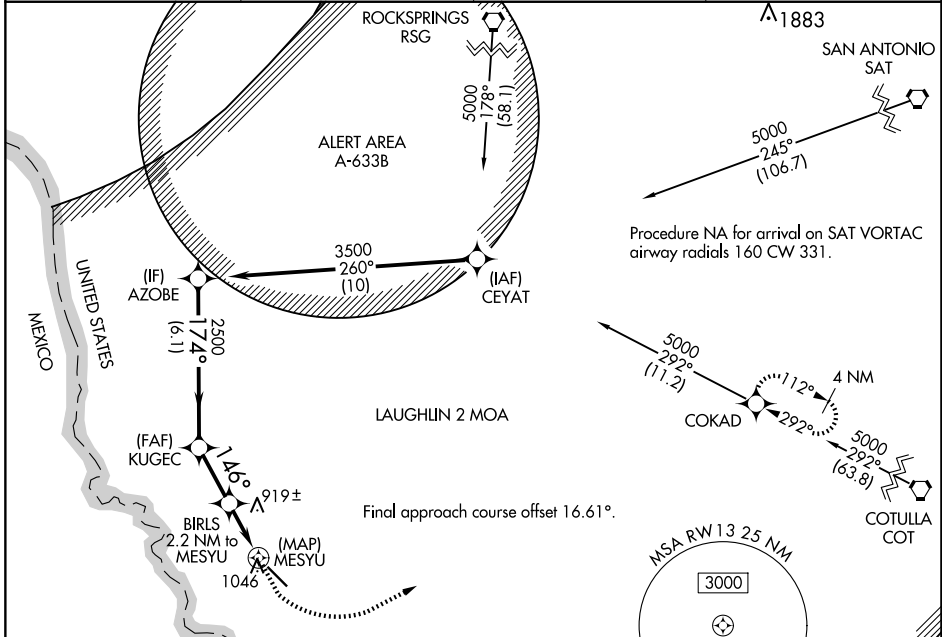


WAAS CH <b>65942</b> <b>W13A</b>	APP CRS <b>146°</b>	Rwy Idg TDZE Apt Elev	<b>5506</b> <b>887</b> <b>887</b>
--	------------------------	-----------------------------	---

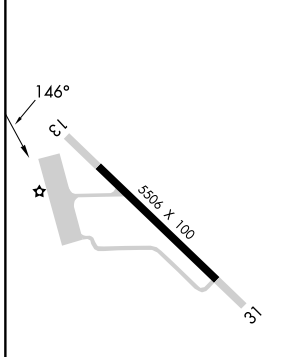
# RNAV (GPS) RWY 13

MAVERICK COUNTY MEML INTL (5T9)

RNP APCH.		MISSED APPROACH: Climb to 1600 then climbing left turn to 4000 direct COKAD and hold.	
AWOS-3 <b>119.175</b>	KDLF ATIS ★ <b>114.4 269.9</b>	DEL RIO APP CON ★ <b>127.75 326.2</b>	UNICOM <b>122.8 (CTAF)</b>



ELEV 887	TDZE 887
----------	----------



AZOBE	KUGEK	BIRLS	MESYU	COKAD
3500	2500	1780	1780	1780
6.1 NM	2.3 NM	1.6 NM	0.6 NM	0.5 NM
3.00° TCH 40	2.2 NM to MESYU	0.6 NM to MESYU	MESYU RWY 13	
1600	4000	COKAD		
CATEGORY	A	B	C	D
LP MDA	1260-1	373 (400-1)		NA
LNAV MDA	1360-1	473 (500-1)	1360-1 <sup>3</sup> / <sub>8</sub> 473 (500-1 <sup>3</sup> / <sub>8</sub> )	NA

SC-3, 23 JAN 2025 to 20 FEB 2025

SC-3, 23 JAN 2025 to 20 FEB 2025