

WAAS CH <b>50208</b> <b>W03A</b>	APP CRS <b>027°</b>	Rwy ldg <b>5500</b> TDZE <b>1269</b> Apt Elev <b>1276</b>
--	------------------------	---

# RNAV (GPS) RWY 3

EPHRATA MUNI (EPH)

RNP APCH.

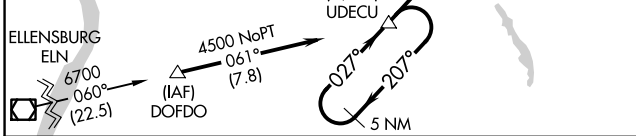
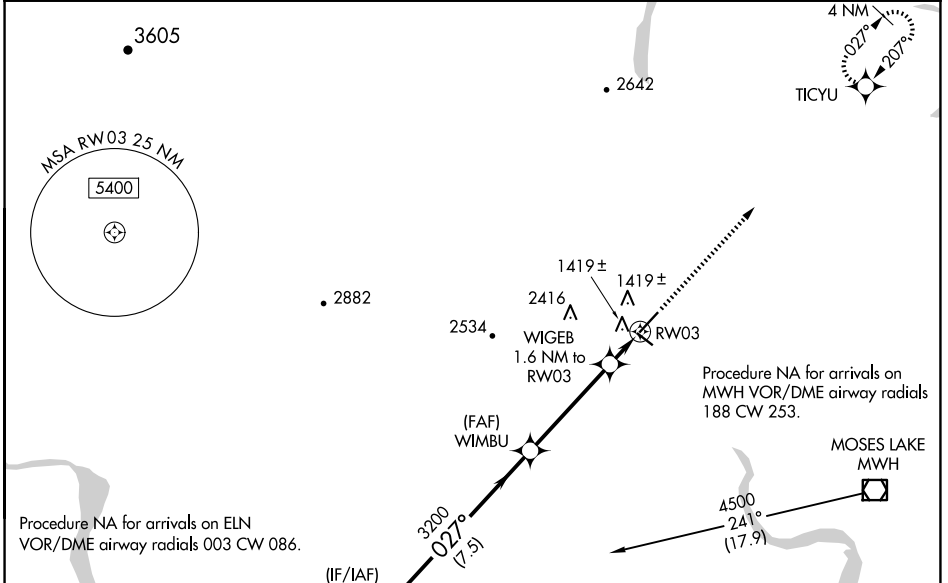
**⚠** For uncompensated Baro-VNAV systems, LNAV/VNAV NA below -17°C or above 46°C. VDP and Baro-VNAV NA when using Moses Lake/Grant County Intl altimeter setting. When local altimeter setting not received, use Moses Lake/Grant County Intl altimeter setting and increase all DA/MDA 40 feet and LNAV Cat C and D visibility 1/2 SM.

MISSED APPROACH: Climb to 3800 direct TICYU and hold.

ASOS  
**135.775**

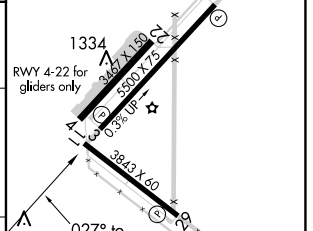
GRANT COUNTY APP CON \*  
**126.4 379.95**

UNICOM  
**122.8 (CTAF) 0**



ELEV 1276	TDZE 1269
-----------	-----------

CATEGORY	A	B	C	D
LPV DA	1519-1		250 (300-1)	
LNAV/VNAV DA	1689-1½		420 (500-1½)	
LNAV MDA	1680-1 411 (500-1)		1680-1¼ 411 (500-1¼)	



REIL Rws 3, 11, 21 and 29	0
MIRL Rws 11-29 and 3-21	0

NW-1, 23 JAN 2025 to 20 FEB 2025

NW-1, 23 JAN 2025 to 20 FEB 2025