

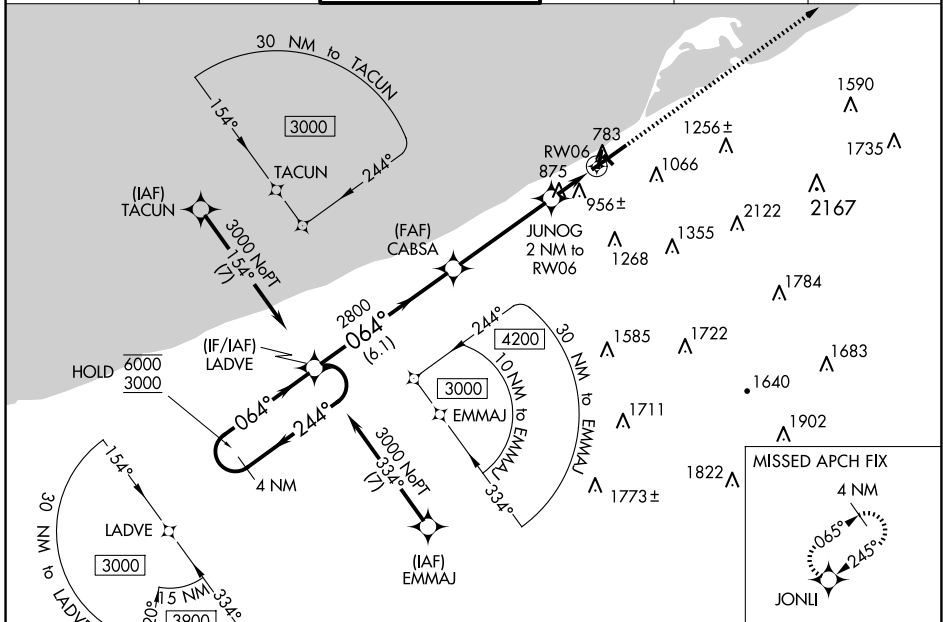
WAAS CH <b>77612</b> <b>W06A</b>	APP CRS <b>064°</b>	Rwy Idg <b>7501</b> TDZE <b>732</b> Apt Elev <b>732</b>
--	------------------------	---

# RNAV (GPS) RWY 6

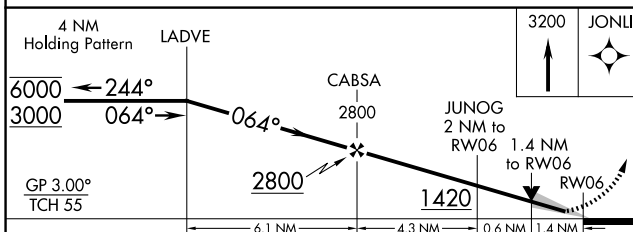
ERIE INTL/TOM RIDGE FLD (ERI)

RNP APCH - GPS.			MALSR	MISSED APPROACH: Climb to 3200 direct JONLI and hold.	
<p><b>⚠</b> Circling NA southeast of Rwy 6-24. Circling Rwy 2, 20 NA at night. For uncompensated Baro-VNAV systems, LNAV/VNAV NA below -15°C or above 54°C. For inop ALS, increase LNAV Cots C and D visibility to 1½ SM.</p>					

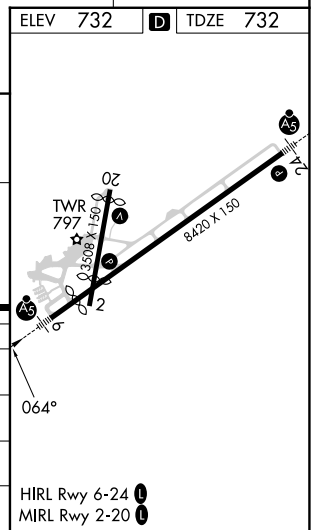
ATIS <b>120.35</b>	BUFFALO APP CON * <b>121.0 257.8</b>	ERIE TOWER * <b>118.1 (CTAF) 0 257.8</b>	GND CON <b>121.9</b>	CLNC DEL <b>126.8</b>	UNICOM <b>122.95</b>
-----------------------	---	---	-------------------------	--------------------------	-------------------------



4 NM Holding Pattern LADVE	3200 JONLI
6000 ← 244°	↑
3000 → 064°	
GP 3.00°	
TCH 55	



CATEGORY	A	B	C	D
LPV DA		982/24	250 (300-½)	
LNAV/VNAV DA		1256/55	524 (600-1)	
LNAV MDA	1220/24	488 (500-½)	1220/50	488 (500-1)
<b>C</b> CIRCLING	1220-1	488 (500-1)	1220-1½ 488 (500-1½)	1340-2 608 (700-2)



NE-4, 23 JAN 2025 to 20 FEB 2025

NE-4, 23 JAN 2025 to 20 FEB 2025