

VOR/DME FBR 114.45 Chan 91 (Y)	APP CRS 215°	Rwy Idg TDZE Apt Elev	6404 7018 7038
--	------------------------	-----------------------------	---

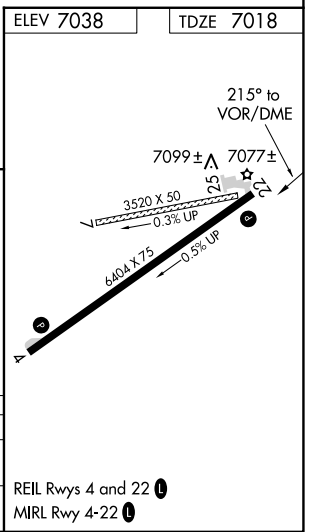
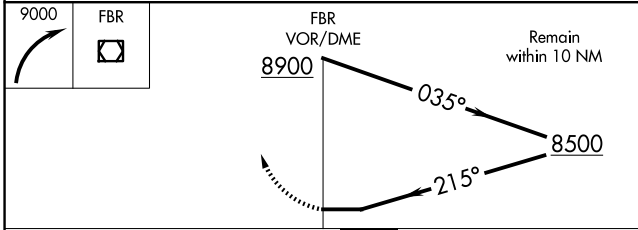
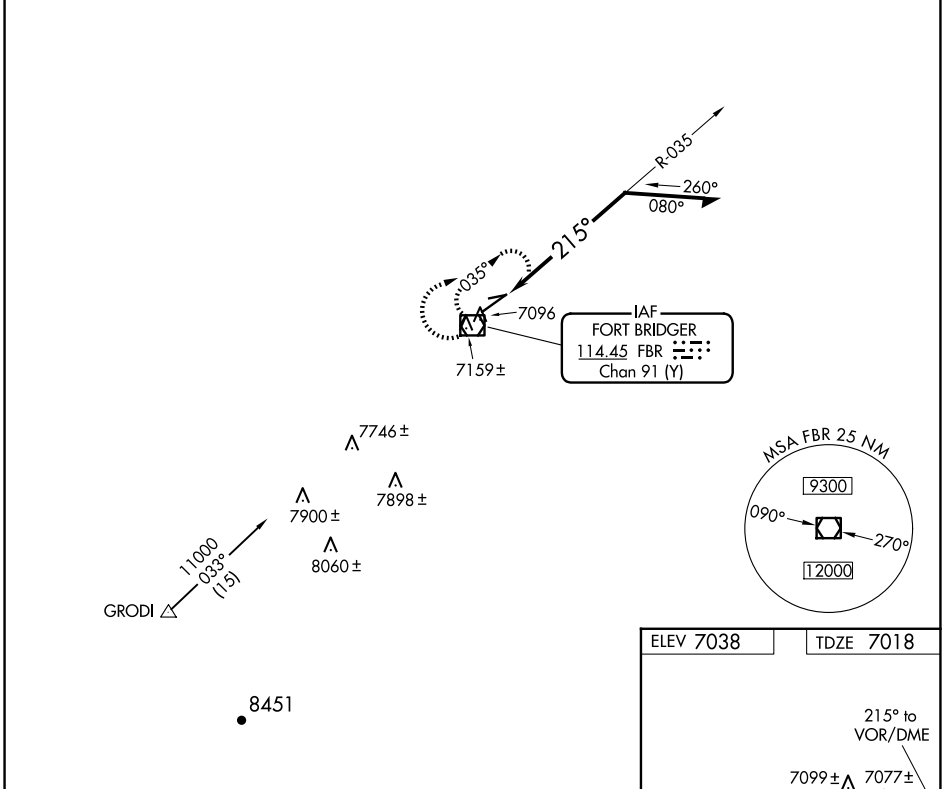
VOR RWY 22

FORT BRIDGER (FBR)

NA Circling NA to Rwys 7 and 25. When local altimeter setting not received, use Evanston altimeter setting and increase all MDAs 100 feet, increase S-22 Cats C and D and Circling Cat C visibility ¼ SM, and Circling Cat D visibility ½ SM.

MISSED APPROACH:
Climbing right turn to 9000 in FBR VOR/DME holding pattern.

AWOS-3PT 118.8	SALT LAKE CENTER 124.35 353.5	UNICOM 122.8 (CTAF)
--------------------------	---	-------------------------------



ELEV 7038	TDZE 7018			
9000	FBR			
FBR VOR/DME 8900 Remain within 10 NM 035° 8500 215°				
CATEGORY	A	B	C	D
S-22	7440-1	422 (500-1)	7440-1 ¼	422 (500-1 ¼)
CIRCLING	7480-1 442 (500-1)	7500-1 462 (500-1)	7660-1 ¾ 622 (700-1 ¾)	7680-2 642 (700-2)

REIL Rwys 4 and 22
MIRL Rwy 4-22

NW-1, 23 JAN 2025 to 20 FEB 2025

NW-1, 23 JAN 2025 to 20 FEB 2025