

WRIGHTSTOWN, NEW JERSEY

VOR/DME or TACAN RWY 24

VORTAC GXU 110.6 Chan 43	APCH CRS 243°	Rwy Idg TDZE Arprt Elev	10,014 117 141
--------------------------------	------------------	-------------------------------	----------------------

AL-150 (USAF)
MC GUIRE FIELD (JOINT BASE MC GUIRE DIX LAKEHURST) (KWRI)

⚠ * When ALS inop, increase CAT AB RVR to 55 and vis to 1 mile, CAT CDE vis to 1 1/2 miles.
** Circling NA SE of Rwy 24 and E of Rwy 36 when R-5001 A/B Active.

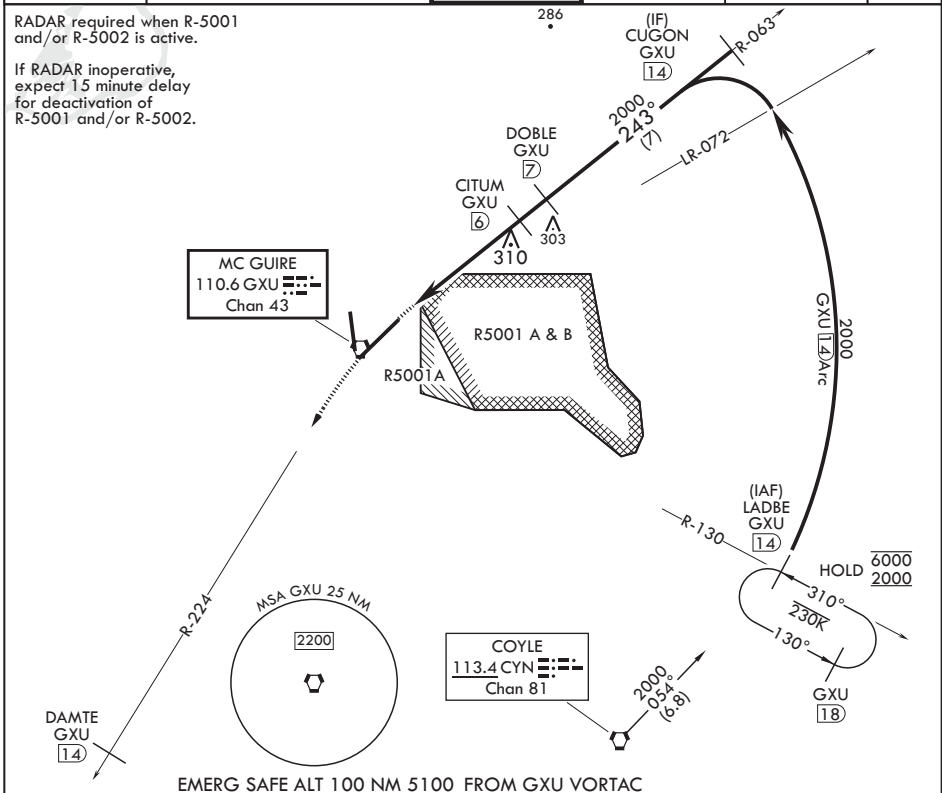


MISSED APPROACH: Climb to 2000 via GXU R-224 to DAMTE, Expect further clearance from ATC.

ATIS 110.6 270.1	MC GUIRE APP CON/DEP CON 126.475 363.8	TOWER 118.65 255.6	GND CON 121.8 275.8	CLNC DEL 135.2 335.8	PAR
---------------------	-------------------------------------------	-----------------------	------------------------	-------------------------	-----

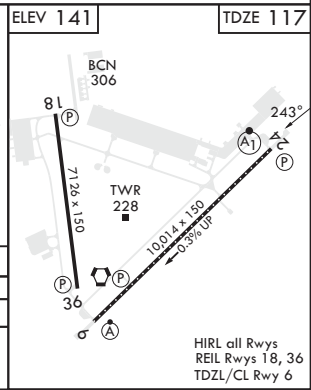
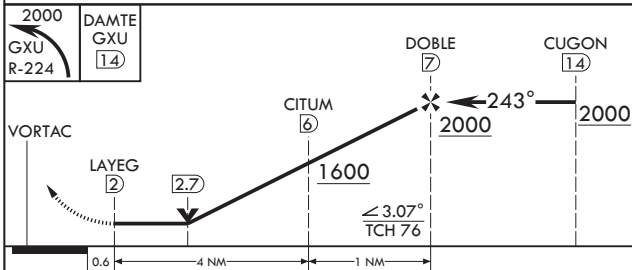
RADAR required when R-5001 and/or R-5002 is active.

If RADAR inoperative, expect 1.5 minute delay for deactivation of R-5001 and/or R-5002.



NE-2, 23 JAN 2025 to 20 FEB 2025

NE-2, 23 JAN 2025 to 20 FEB 2025



CATEGORY	A	B	C	D	E
S-24*	640/24 523 (500-½)	640/55 523 (500-1)	700-1½ 559 (600-1½)	700-2 559 (600-2)	1200-3 1059 (1100-3)
Ⓢ CIRCLING**	680-1 539 (600-1)	700-1½ 559 (600-1½)	700-2 559 (600-2)	1200-3 1059 (1100-3)	

HIRL all Rwys
REIL Rwy 18, 36
TDZL/CL Rwy 6

WRIGHTSTOWN, NEW JERSEY

Amdt 8 18MAY23

MC GUIRE FIELD (JOINT BASE MC GUIRE DIX LAKEHURST) (KWRI)

40°01'N - 74°36'W

VOR/DME or TACAN RWY 24