

RNAV (GPS) RWY 4

APCH CRS	Rwy ldg	4503
044°	TDZE	1066
	Arprt Elev	1066

AL-155 [USA]

MARSHALL AAF (KFRI)

RNAV APCH - GPS

ODALS

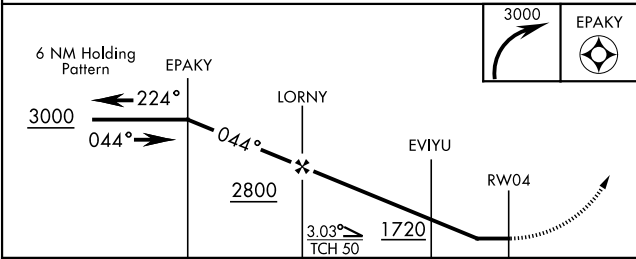
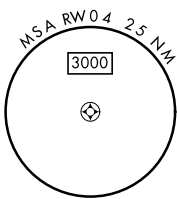
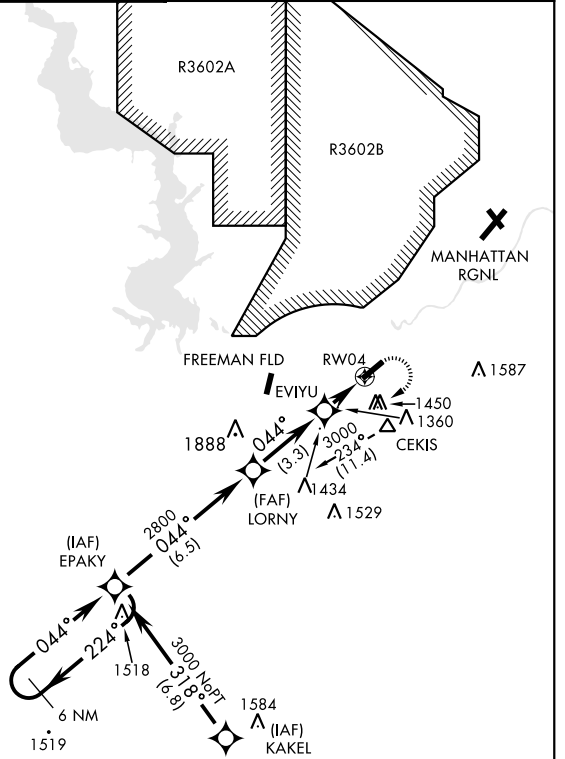


MISSED APPROACH: Climbing right turn to 3000 direct EPAKY and hold.

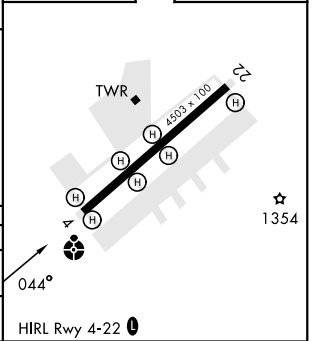
- ▼ * When ALS inop increase CAT CD vis to 1¾ miles.
- ** Circling not authorized NW of Rwy 4-22.
- ▲ NA Visibility reduction by helicopters NA

ATIS ★	MARSHALL GCA	TOWER ★	GND CON	CLNC DEL	ASR/PAR
121.025	121.25 254.35	126.2 (CTAF) 0 248.65	140.20 229.4	119.65	

Procedure NA for arrival at CEKIS via V4-508 eastbound.



ELEV 1066	TDZE 1066
-----------	-----------



CATEGORY	A	B	C	D
LNNAV MDA *	1660-1 594 (600-1)	1660-1 594 (600-1)	1660-1 594 (600-1)	1660-1 594 (600-1)
CIRCLING **	1700-1 634 (700-1)	1760-1 694 (700-1)	1760-2 694 (700-2)	1900-2 834 (900-2)

RNAV (GPS) RWY 4

NC-2, 23 JAN 2025 to 20 FEB 2025

NC-2, 23 JAN 2025 to 20 FEB 2025