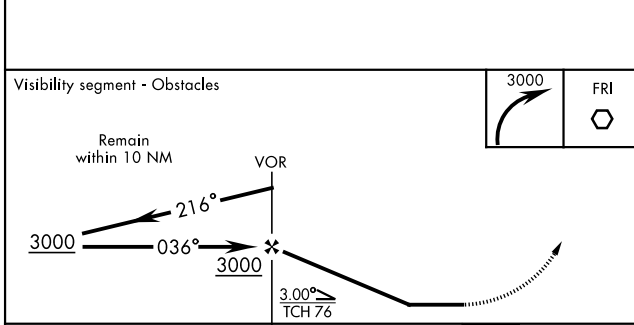
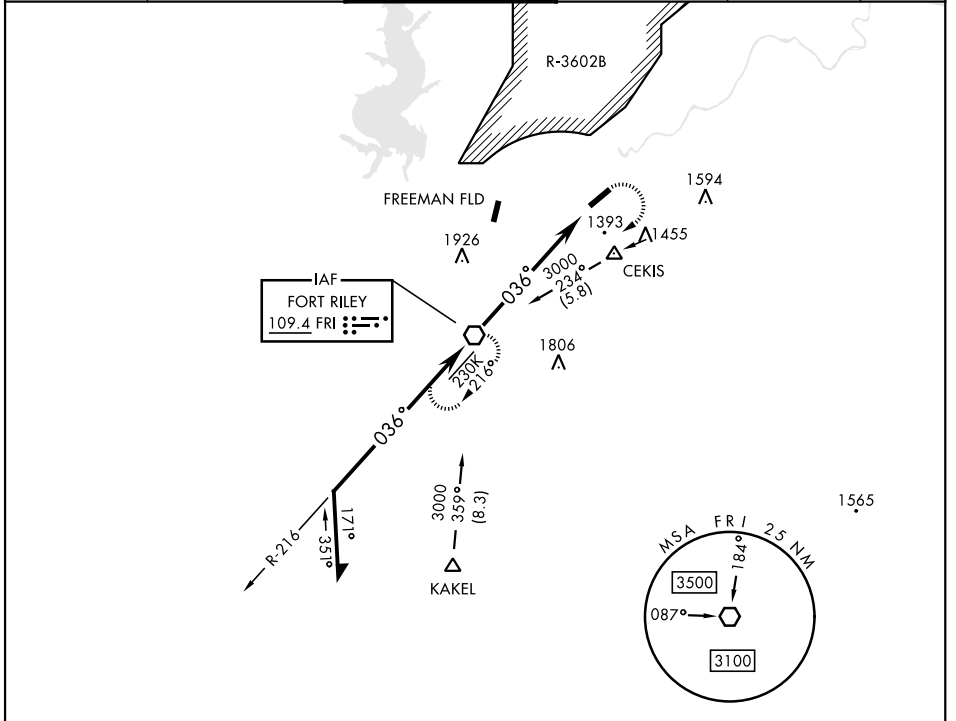


VOR RWY 4

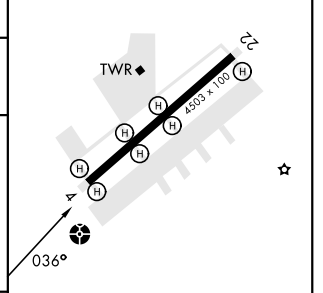
VOR FRI 109.4	APCH CRS 036°	Rwy Idg 4503 TDZE 1066 Arpt Elev 1066	AL-155 [USA]	MARSHALL AAF (KFRI)
-------------------------	-------------------------	--	--------------	---------------------

<p>▼ * Circling not authorized NW of Rwy 4-22. Rwy 4 helicopter visibility reduction below 3/4 mile not authorized.</p>	<p>ODALS</p>	<p>MISSED APPROACH: Climbing right turn to 3000 direct FRI VOR and hold.</p>
--	--------------	--

ATIS ★ 121.025	MARSHALL GCA 121.25 254.35	TOWER ★ 126.2 (CTAF) 248.65	GND CON 140.20 229.4	CLNC DEL 119.65	ASR/PAR
--------------------------	--------------------------------------	---------------------------------------	--------------------------------	---------------------------	---------



ELEV 1066	TDZE 1066
-----------	-----------



CATEGORY	A	B	C	D	HIRL Rwy 4-22 0 FAF to MAP 6.3 NM												
S-4	1800-1 734 (800-1)	1800-2 734 (800-2)				<table border="1"> <tr> <td>Knots</td> <td>60</td> <td>90</td> <td>120</td> <td>150</td> <td>180</td> </tr> <tr> <td>Min:Sec</td> <td>6:18</td> <td>4:12</td> <td>3:09</td> <td>2:31</td> <td>2:06</td> </tr> </table>	Knots	60	90	120	150	180	Min:Sec	6:18	4:12	3:09	2:31
Knots	60	90	120	150	180												
Min:Sec	6:18	4:12	3:09	2:31	2:06												
CIRCLING *	1800-1 734 (800-1)	1800-2 734 (800-2)	1900-2 834 (900-2 3/4)														

VOR RWY 4

NC-2, 23 JAN 2025 to 20 FEB 2025

NC-2, 23 JAN 2025 to 20 FEB 2025