


VOR/DME GRI 116.55 Chan 112(Y)	APP CRS 353°	Rwy Idg 7002 TDZE 1847 Apt Elev 1847
--	------------------------	---

VOR/DME RWY 35

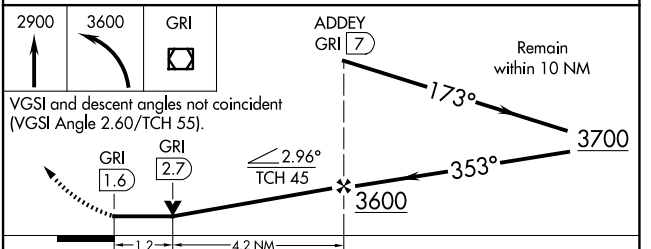
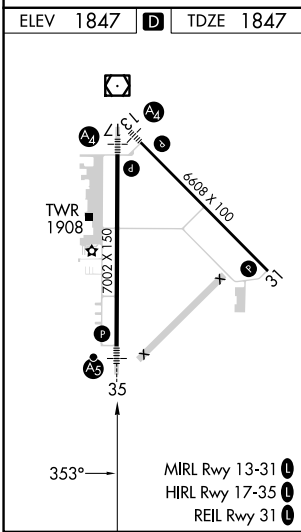
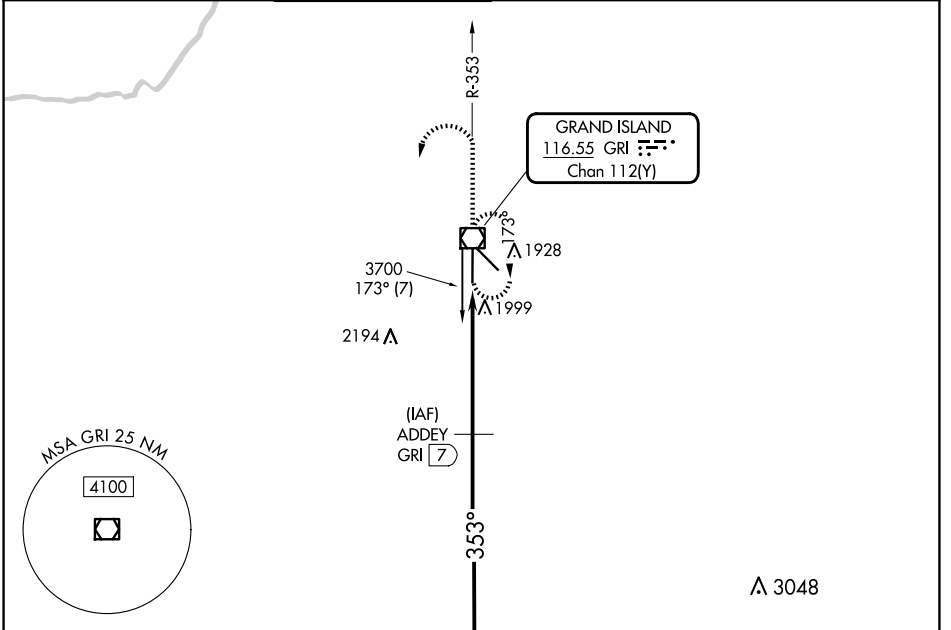
CENTRAL NEBRASKA RGNL (GRI)

⚠ VDP NA when using Aurora altimeter setting. When local altimeter setting not received, use Aurora altimeter setting and increase all MDA 60 feet, increase Circling Cats C/D visibility ¼ SM. For inop MALSRL, increase S-35 Cat D visibility to 1¼ mile.

MALSRL 

MISSED APPROACH: Climb to 2900, then climbing left turn to 3600 direct GRI VOR/DME and hold.

ATIS 127.4	MINNEAPOLIS CENTER 119.4 278.8	GRAND ISLAND TOWER* 118.2 (CTAF) 259.3	GND CON 121.9 259.3	CLNC DEL 121.9	CLNC DEL 126.05 (when twr closed)	UNICOM 122.95
----------------------	--	--	-------------------------------	--------------------------	--	-------------------------



CATEGORY	A	B	C	D
S-35	2260-½ 413 (500-½)		2260-¾ 413 (500-¾)	2260-1 413 (500-1)
CIRCLING	2300-1 453 (500-1)		2400-1½ 553 (600-1½)	2560-2¼ 713 (800-2¼)

NC-2, 23 JAN 2025 to 20 FEB 2025

NC-2, 23 JAN 2025 to 20 FEB 2025