

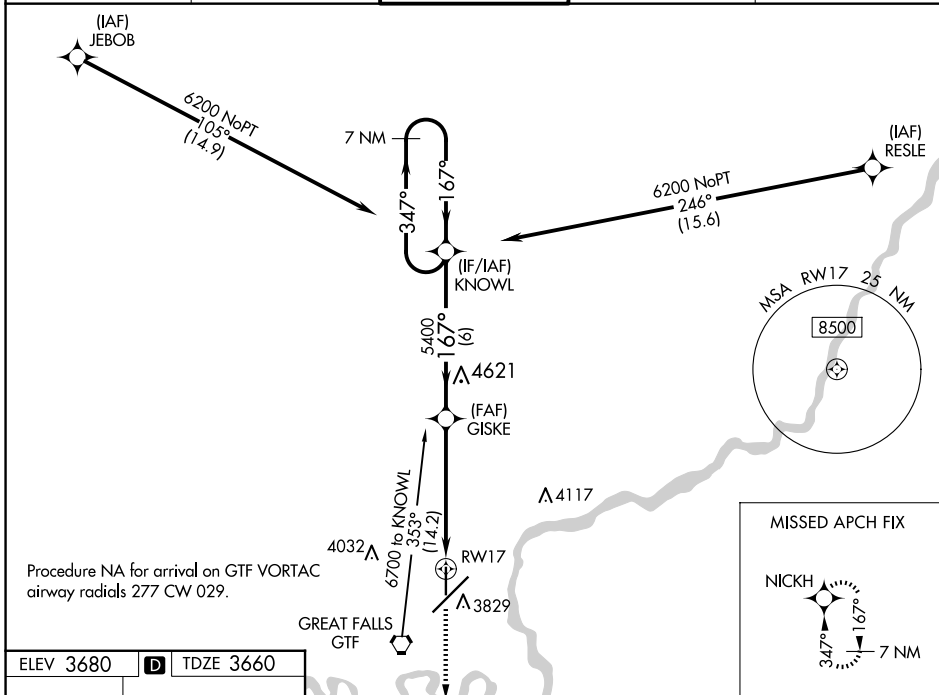
WAAS CH <b>49240</b> <b>W17A</b>	APP CRS <b>167°</b>	Rwy Idg TDZE Apt Elev	<b>5800</b> <b>3660</b> <b>3680</b>
--	------------------------	-----------------------------	---

# RNAV (GPS) RWY 17

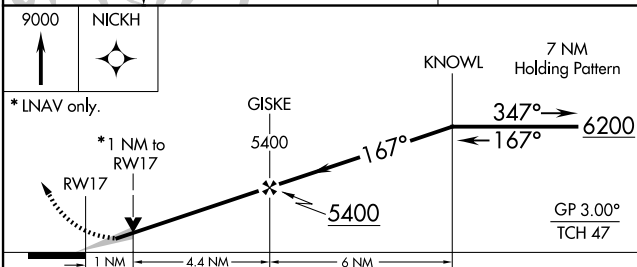
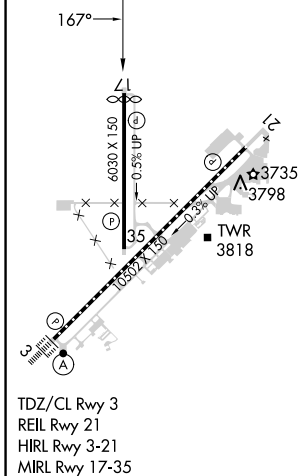
GREAT FALLS INTL (GTF)

RNP APCH - GPS.	MISSED APPROACH: Climb to 9000 direct NICKH and hold, continue climb-in-hold to 9000.
▼ For uncompensated Baro-VNAV systems, LNAV/VNAV NA ▲ below -26°C or above 52°C.	

ATIS <b>126.6 269.0</b>	GREAT FALLS APP CON <b>128.6 379.175</b>	GREAT FALLS TOWER <b>118.7 282.2</b>	GND CON <b>121.7 348.6</b>	CLNC DEL <b>121.7 348.6</b>
----------------------------	---	---	-------------------------------	--------------------------------



ELEV 3680	<b>D</b>	TDZE 3660
-----------	----------	-----------



CATEGORY	A	B	C	D
LPV DA		3910-3/4	250 (300-3/4)	
LNAV/ VNAV DA		3910-3/4	250 (300-3/4)	
LNAV MDA		4000-1	340 (400-1)	
<b>C</b> CIRCLING	4140-1	460 (500-1)	4340-1 3/4 660 (700-1 3/4)	4420-2 1/4 740 (800-2 1/4)

NW-1, 23 JAN 2025 to 20 FEB 2025

NW-1, 23 JAN 2025 to 20 FEB 2025