

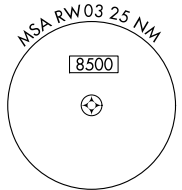
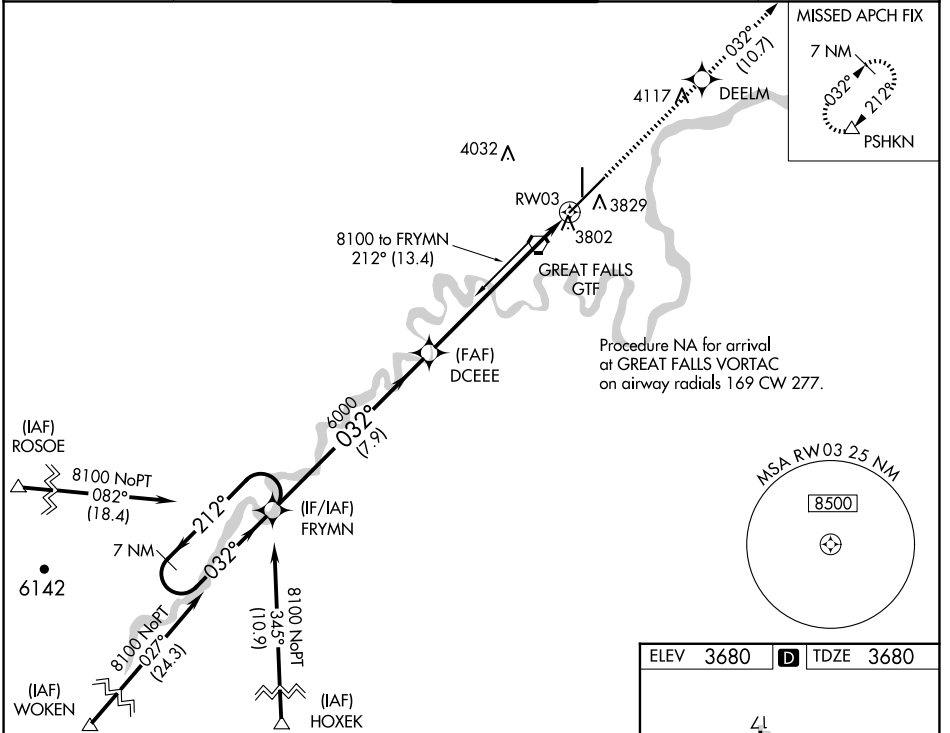
WAAS CH 70602 W03A	APP CRS 032°	Rwy Idg 10502 TDZE 3680 Apt Elev 3680
--	------------------------	--

RNAV (GPS) Y RWY 3

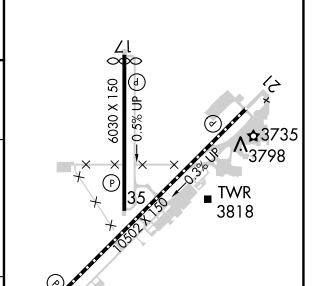
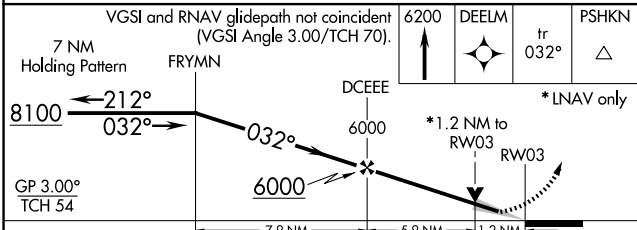
GREAT FALLS INTL (GTF)

RNP APCH - GPS.	ALSF-2	MISSED APPROACH: Climb to 6200 direct DEELM and on track 032° to PSHKN and hold.
<p>▼ For uncompensated Baro-VNAV systems, LNAV/VNAV NA below -25°C or above 50°C. For inop ALS, increase LNAV/VNAV all Cats visibility to RVR 4500.</p>		

ATIS 126.6 269.0	GREAT FALLS APP CON 128.6 379.175	GREAT FALLS TOWER 118.7 282.2	GND CON 121.7 348.6	CLNC DEL 121.7 348.6
----------------------------	---	---	-------------------------------	--------------------------------



ELEV 3680	D TDZE 3680
-----------	--------------------



CATEGORY	A	B	C	D
LPV DA	3880/18		200 (200-½)	
LNAV/VNAV DA	3963/24		283 (300-½)	
LNAV MDA	4140/24 460 (500-½)		4140/45 460 (500-¾)	
C CIRCLING	4140-1 460 (500-1)		4340-1¼ 660 (700-1¼) 4420-2¼ 740 (800-2¼)	

HIRL Rwy 3-21	MIRL Rwy 17-35
REIL Rwy 21	TDZ/CL Rwy 3

NW-1, 23 JAN 2025 to 20 FEB 2025

NW-1, 23 JAN 2025 to 20 FEB 2025