

VORTAC SQS 114.7 Chan 94	APP CRS 076°	Rwy Idg TDZE 149 Apt Elev 162	5011
--	------------------------	---	-------------

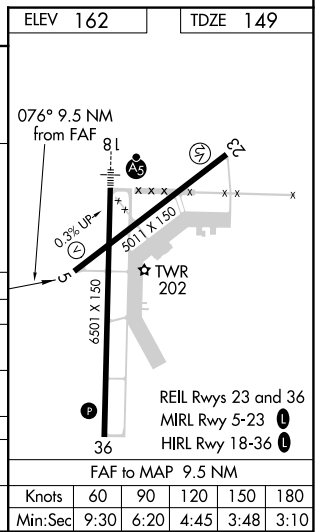
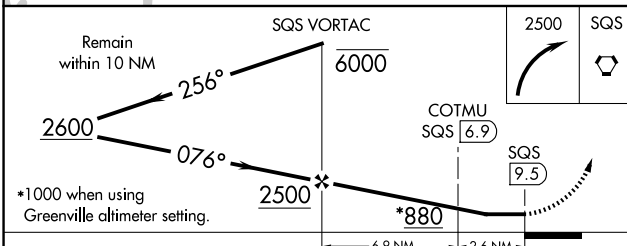
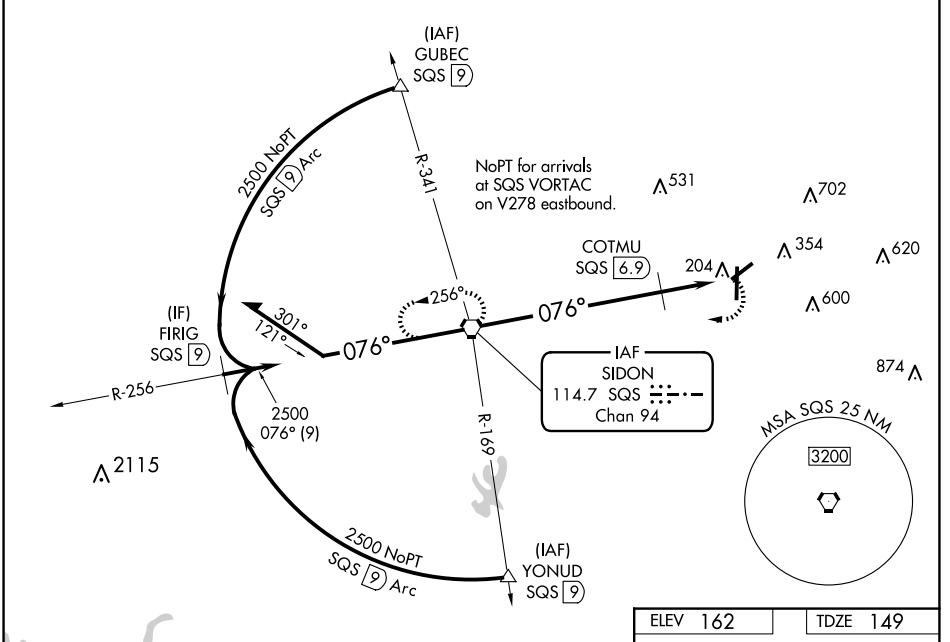
VOR RWY 5

GREENWOOD-LEFLORE (GWO)

▼ When local altimeter setting not received, use Greenville altimeter setting and increase all MDAs 120 feet and visibility S-5 Cat B and Circling Cat A/B ¼ SM, and S-5 Cat C/D and Circling Cat C ½ SM and COTMU Fix Minimums S-5 Cat C/D ¼ SM and Circling Cat C ½ SM.
▲ Rwy 5 helicopter visibility reduction below 1 SM NA. Straight-in Rwy 5 NA at night, Circling Rwy 5, 23 NA at night.

MISSED APPROACH:
Climbing right turn to 2500 direct SQS VORTAC and hold.

ASOS 119.975	MEMPHIS CENTER 132.5 259.1	GREENWOOD TOWER * 118.35 (CTAF) 367.6	GND CON 125.55 373.4	CLNC DEL 125.55	UNICOM 122.95
------------------------	--------------------------------------	---	--------------------------------	---------------------------	-------------------------



CATEGORY	A	B	C	D
S-5	880-1	731 (800-1)	880-2	731 (800-2)
C CIRCLING	880-1	718 (800-1)	1000-2½ 838 (900-2½)	1120-3 958 (1000-3)
COTMU FIX MINIMUMS (DME REQUIRED)				
S-5	600-1	451 (500-1)	600-1¾	451 (500-1¾)
C CIRCLING	760-1	598 (600-1)	1000-2½ 838 (900-2½)	1120-3 958 (1000-3)

SC-4, 23 JAN 2025 to 20 FEB 2025

SC-4, 23 JAN 2025 to 20 FEB 2025

Knots	60	90	120	150	180
Min:Sec	9:30	6:20	4:45	3:48	3:10