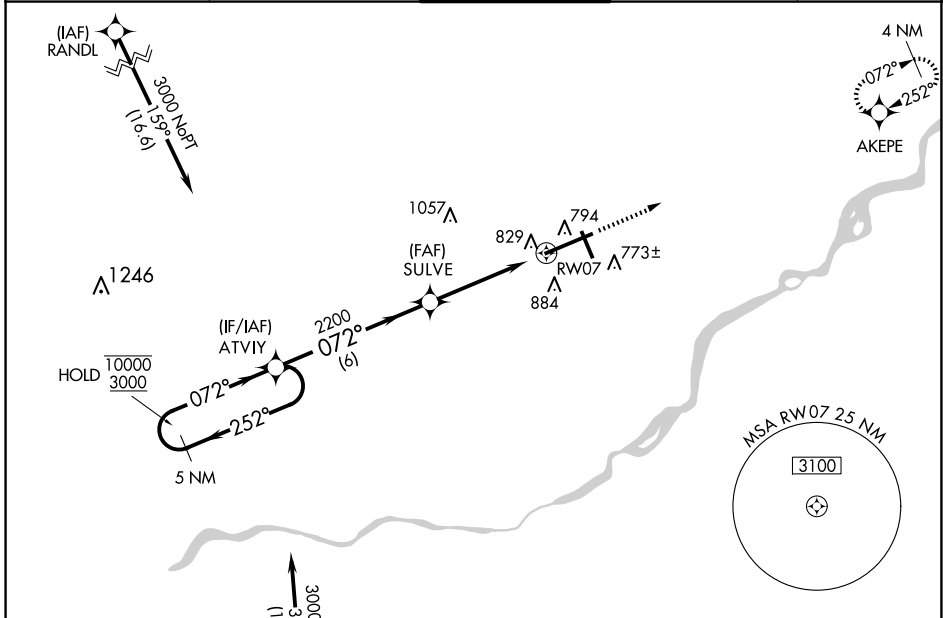


WAAS CH 99399 W07A	APP CRS 072°	Rwy Idg TDZE Apt Elev	10599 683 683
--	------------------------	-----------------------------	--

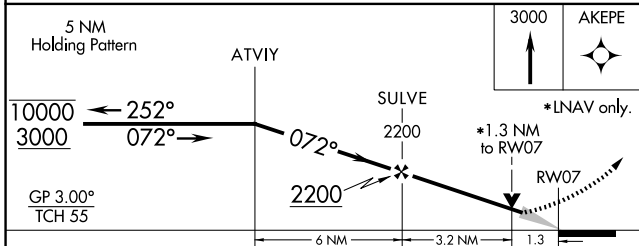
RNAV (GPS) RWY 7

EUGENE F KRANZ TOLEDO EXPRESS (TOL)

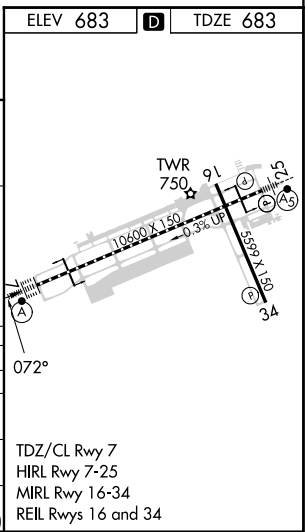
RNP APCH.		ALSF-2		MISSED APPROACH: Climb to 3000 direct AKEPE and hold.											
<p>T For uncompensated Baro-VNAV systems, LNAV/VNAV NA below -17°C or above 52°C. A For inop ALS, increase LPV all Cats visibility to RVR 5000. Increase LNAV/VNAV Cat E and LNAV Cat E visibility to 1$\frac{1}{8}$ SM. ASR</p>		<table border="1"> <tr> <td>ATIS</td> <td>TOLEDO APP CON</td> <td>TOLEDO TOWER</td> <td>GND CON</td> <td>CLNC DEL</td> </tr> <tr> <td>118.75</td> <td>290.225</td> <td>118.1 285.4</td> <td>121.9 348.6</td> <td>121.75 348.6</td> </tr> </table>		ATIS	TOLEDO APP CON	TOLEDO TOWER	GND CON	CLNC DEL	118.75	290.225	118.1 285.4	121.9 348.6	121.75 348.6		
ATIS	TOLEDO APP CON	TOLEDO TOWER	GND CON	CLNC DEL											
118.75	290.225	118.1 285.4	121.9 348.6	121.75 348.6											



ELEV 683	D	TDZE 683
----------	----------	----------



CATEGORY	A	B	C	D	E
LPV DA	1018/40 335 (400- $\frac{3}{4}$)				
LNAV/ VNAV DA	1129/50 446 (500-1)				
LNAV MDA	1140/24	457 (500- $\frac{1}{2}$)	1140/40 457 (500- $\frac{3}{4}$)	1140/50	457 (500-1)
C CIRCLING	1200-1	517 (600-1)	1300-1 $\frac{3}{4}$ 617 (700-1 $\frac{3}{4}$)	1360-2 $\frac{1}{4}$ 677 (700-2 $\frac{1}{4}$)	1360-2 $\frac{1}{2}$ 677 (700-2 $\frac{1}{2}$)



EC-2, 23 JAN 2025 to 20 FEB 2025

EC-2, 23 JAN 2025 to 20 FEB 2025