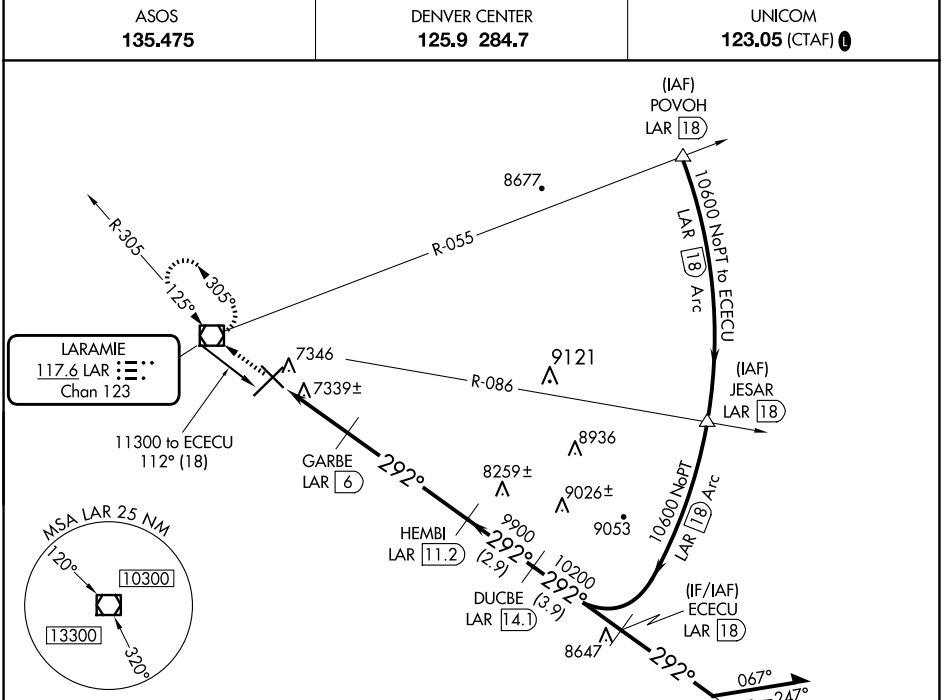


VOR/DME LAR 117.6 Chan 123	APP CRS 292°	Rwy Idg TDZE Apt Elev 6301 7278 7284
---	------------------------	--

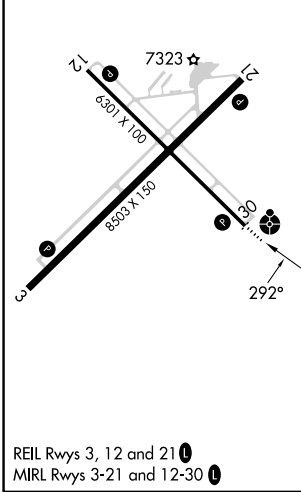
VOR/DME RWY 30

LARAMIE RGNL (L.A.R.)

ASOS 135.475	DENVER CENTER 125.9 284.7	UNICOM 123.05 (CTAF) 0
		MISSED APPROACH: Climb to 9600 direct LAR VOR/DME and hold, continue climb-in-hold to 9600.



ELEV 7284	D	TDZE 7278
-----------	---	-----------



9600	LAR	ECECU LAR 18	Remain within 10 NM
8220	LAR 4	GARBE LAR 6	HEMBI LAR 11.2
9900	LAR 3.1	DUCBE LAR 14.1	ECECU LAR 18
10200			
10600			
0.9	2 NM	5.2 NM	2.9 NM
3.9 NM			
CATEGORY	A	B	C
S-30	7600-¾ 322 (400-¾)		7600-1 322 (400-1)
CIRCLING	7660-1 376 (400-1)	7760-1 476 (500-1)	7880-1½ 596 (600-1½) 7920-2 636 (700-2)

NW-1, 23 JAN 2025 to 20 FEB 2025

NW-1, 23 JAN 2025 to 20 FEB 2025