


VORTAC LNK <b>116.1</b> Chan <b>108</b>	APP CRS <b>185°</b>	Rwy Idg <b>12901</b> TDZE <b>1195</b> Apt Elev <b>1219</b>
---	------------------------	--

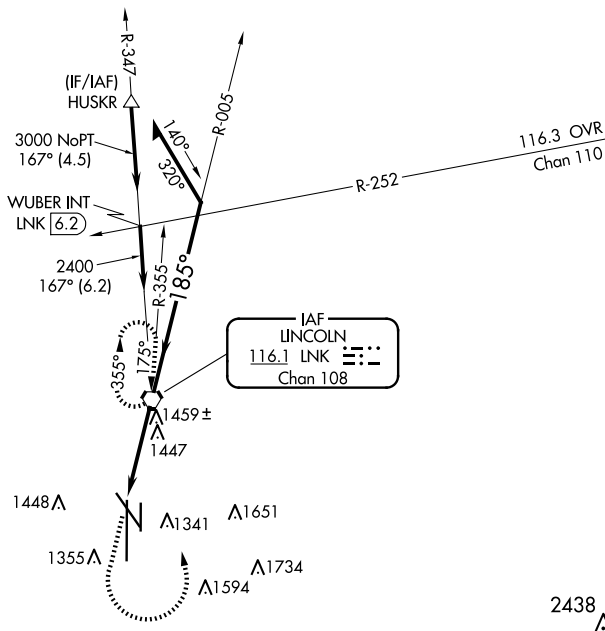
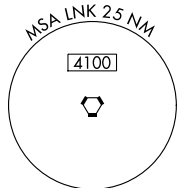
# VOR Y RWY 18

LINCOLN (LNK)

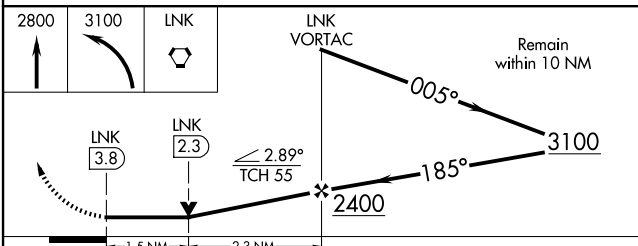
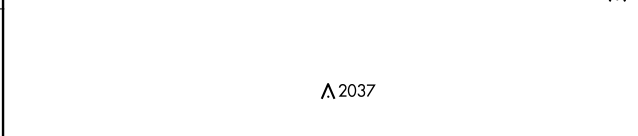
**⚠** Inop table does not apply. VDP NA when using Beatrice altimeter setting. When local altimeter setting not received, use Beatrice altimeter setting and increase all MDA 100 feet; increase S-18 all Cats visibility ¼ SM and Circling Cat C/D visibilities ¼ SM.

**MALSR**  
  
MISSED APPROACH: Climb to 2800 then climbing left turn to 3100 direct LNK VORTAC and hold.

ATIS <b>118.05 290.9</b>	OMAHA APP CON <b>124.0 270.3</b>	LINCOLN TOWER* <b>118.5 (CTAF) 253.5</b>	GND CON <b>121.9 275.8</b>	CLNC DEL <b>120.7 225.4</b>	UNICOM <b>122.95</b>
-----------------------------	-------------------------------------	---	-------------------------------	--------------------------------	-------------------------



ELEV 1219	<b>D</b>	TDZE 1195
-----------	----------	-----------



CATEGORY	A	B	C	D
S-18	1720/55	525 (600-1)	1720-1½	525 (600-1½)
<b>C</b> CIRCLING	1720-1 501 (600-1)	1760-1 541 (600-1)	1820-1¾ 601 (700-1¾)	1960-2½ 741 (800-2½)

NC-2, 23 JAN 2025 to 20 FEB 2025

NC-2, 23 JAN 2025 to 20 FEB 2025