

SW-3, 23 JAN 2025 to 20 FEB 2025

TOP ALTITUDE:
FL230

TAKEOFF MINIMUMS

Rwys 6L/R, 7L/R: NA-ATC.

Rwys 24L/R, 25L/R: Standard with minimum climb of 500' per NM to 640.

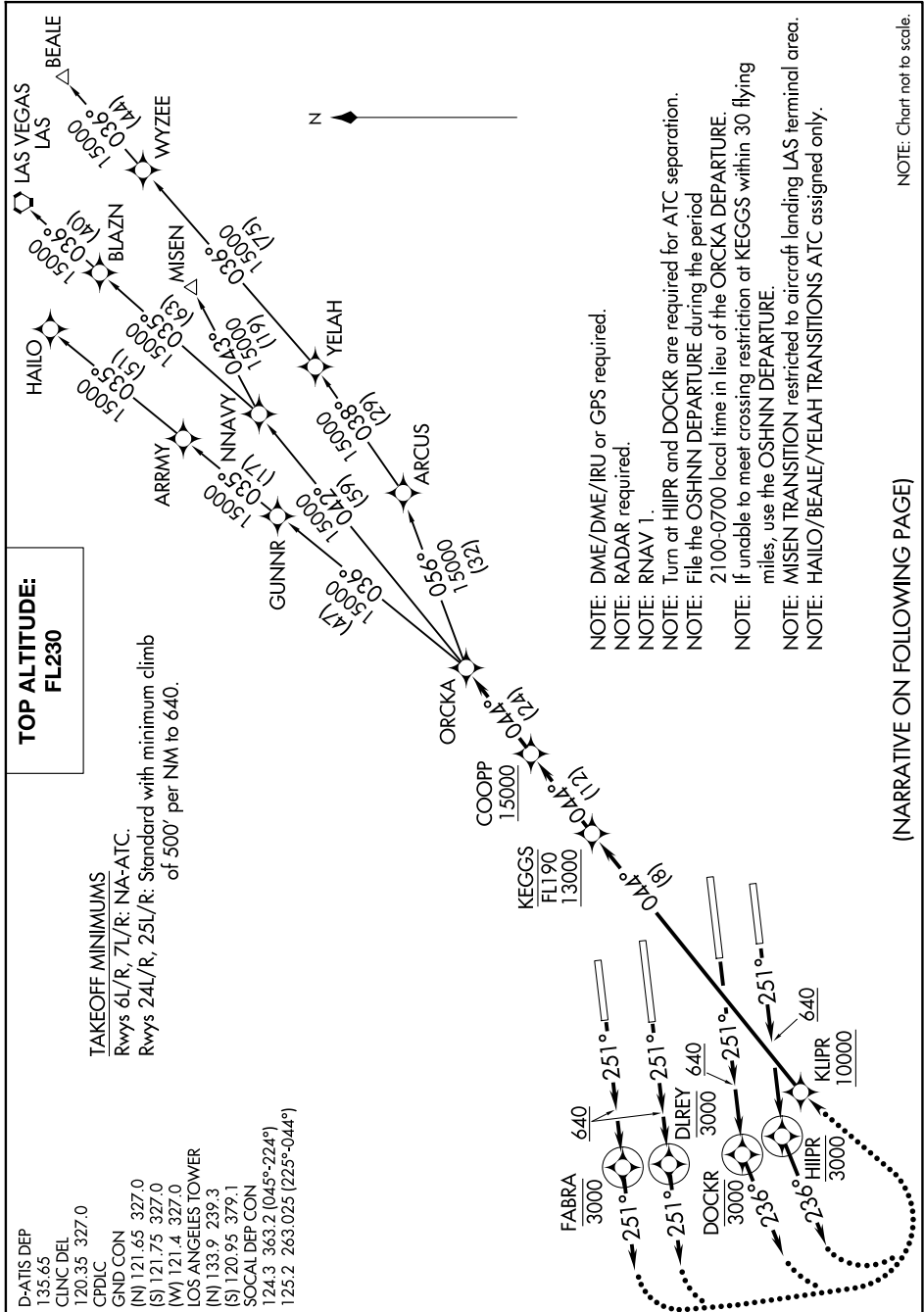
D-ATIS DEP
135.65
CUNCDL
120.35 327.0
CPDLC

GND CON
(N) 121.65 327.0
(S) 121.75 327.0
(W) 121.4 327.0

LOS ANGELES TOWER
(N) 133.9 239.3
(S) 120.95 379.1
SOCAL DEP CON
124.3 363.2 (045°-224°)
125.2 263.025 (225°-044°)

ORCKA FIVE DEPARTURE (RNAV)
(ORCKA5.ORCKA) 10SEP20

LOS ANGELES, CALIFORNIA
LOS ANGELES INTL (LAX)



(NARRATIVE ON FOLLOWING PAGE)

NOTE: Chart not to scale.

SW-3, 23 JAN 2025 to 20 FEB 2025