

EEVAA ONE DEPARTURE (RNAV)

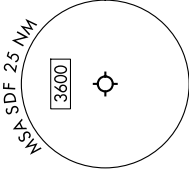
LOUISVILLE, KENTUCKY

SE-1, 23 JAN 2025 to 20 FEB 2025

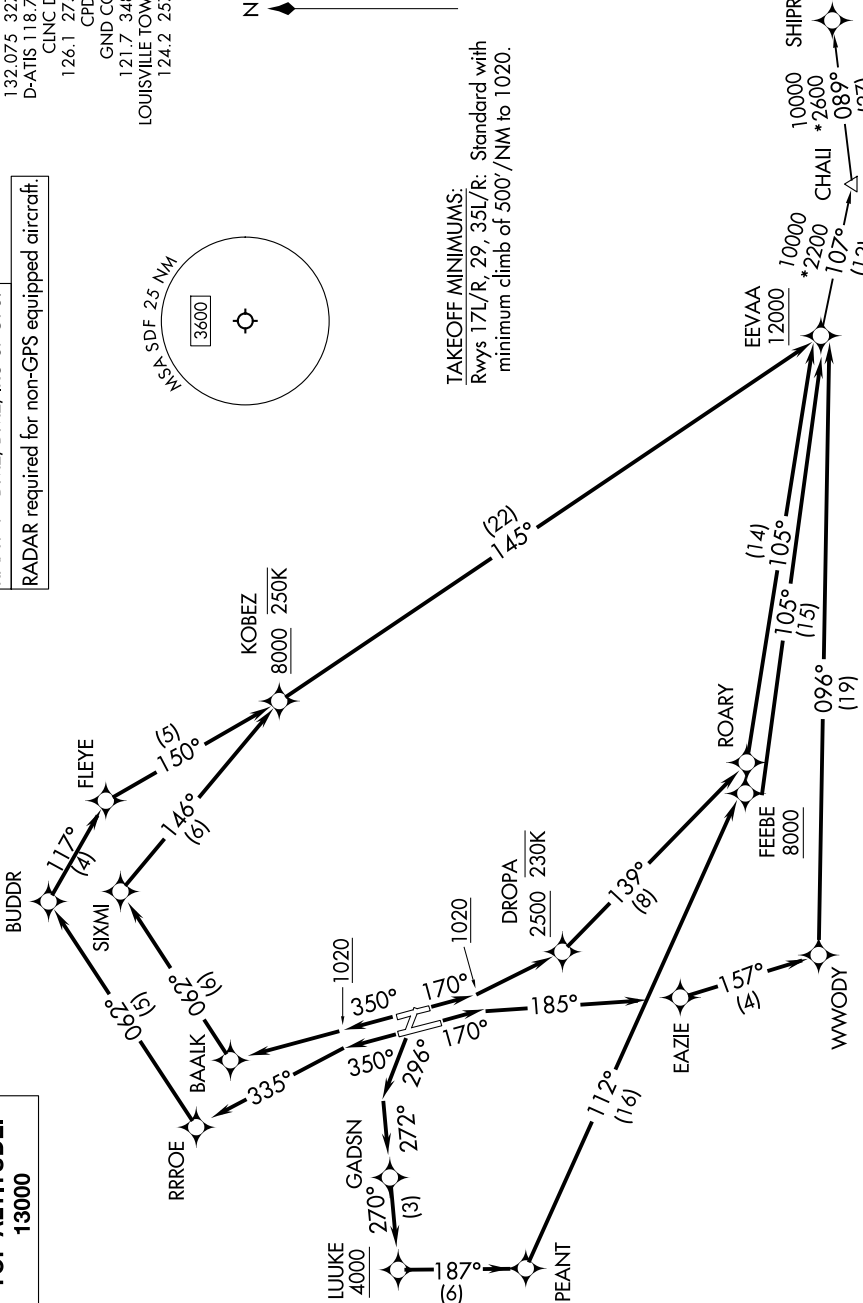
TOP ALTITUDE:
13000

RNAV 1 - DME/DME/RU or GPS.
RADAR required for non-GPS equipped aircraft.

LOUISVILLE DEP CON
132.075 327.0
D-ATIS 118.725
CLNC DEL
126.1 275.8
CPDIC
GND CON
121.7 348.6
LOUISVILLE TOWER
124.2 257.8



TAKEOFF MINIMUMS:
Rwys 17L/R, 29, 35L/R: Standard with
minimum climb of 500'/NM to 1020.



NOTE: Chart not to scale.

(CONTINUED ON FOLLOWING PAGE)

SE-1, 23 JAN 2025 to 20 FEB 2025

EEVAA ONE DEPARTURE (RNAV)

(EEVAA1.EEVAA) 11 JUL 24

LOUISVILLE, KENTUCKY

LOUISVILLE MUHAMMAD ALI INTL (SDF)