

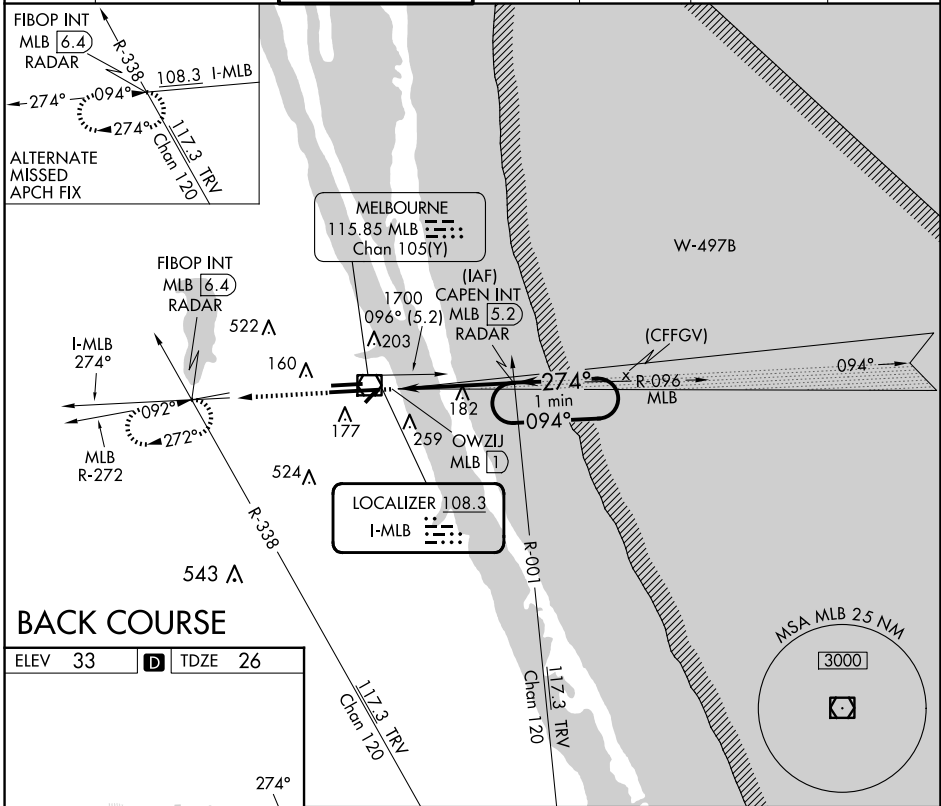
LOC I-MLB	APP CRS	Rwy Idg	<b>9482</b>
<b>108.3</b>	<b>274°</b>	TDZE	<b>26</b>
		Apt Elev	<b>33</b>

# LOC BC RWY 27L

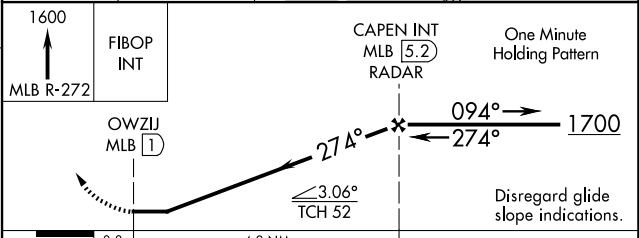
MELBOURNE ORLANDO INTL (MLB)

**MISSED APPROACH:** Climb to 1600 on MLB VOR/DME R-272 to FIBOP INT/MLB VOR/DME 6.4 DME/RADAR and hold.

ATIS	ORLANDO APP CON	MELBOURNE TOWER ★	GND CON	CLNC DEL	CLNC DEL	UNICOM
<b>132.55</b>	<b>132.65 281.425</b>	<b>118.2 (CTAF) 1 257.8</b>	<b>121.9</b>	<b>121.9</b>	<b>132.65</b> (When twr closed)	<b>122.95</b>



ELEV 33	<b>D</b>	TDZE 26
TDZ/CL Rwy 9R REIL Rwy 27L MIRL Rws 5-23 and 9L-27R HIRL Rwy 9R-27L		
FAF to MAP 4.2 NM		
Knots	60	90 120 150 180
Min:Sec	4:12	2:48 2:06 1:41 1:24



CATEGORY	A	B	C	D
S-27L	500-1	474 (500-1)	500-1 <sup>3</sup> / <sub>8</sub>	474 (500-1 <sup>3</sup> / <sub>8</sub> )
<b>C</b> CIRCLING	500-1 467 (500-1)	560-1 527 (600-1)	680-1 <sup>3</sup> / <sub>4</sub> 647 (700-1 <sup>3</sup> / <sub>4</sub> )	880-2 <sup>3</sup> / <sub>4</sub> 847 (900-2 <sup>3</sup> / <sub>4</sub> )

SE-3, 23 JAN 2025 to 20 FEB 2025

SE-3, 23 JAN 2025 to 20 FEB 2025