

(BNGOS4.BNGOS) 24081

AL-256 (FAA)

MIAMI-OPA LOCKA EXEC (OPF<sup>T</sup>)  
MIAMI, FLORIDA

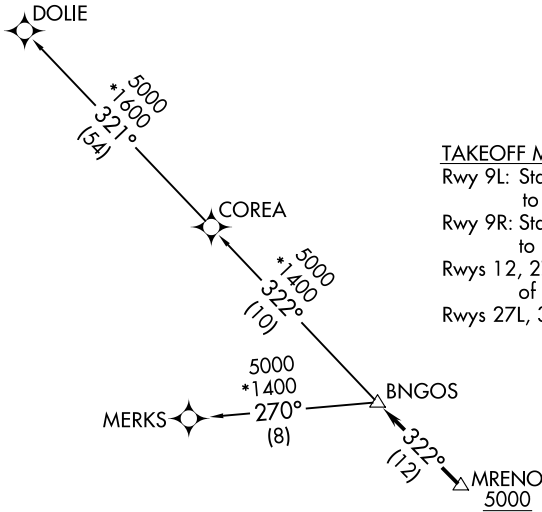
# BNGOS FOUR DEPARTURE (RNAV)

RNAV-1 DME/DME/IRU or GPS.

RADAR required.

**TOP ALTITUDE:  
ASSIGNED BY ATC**

MIAMI DEP CON  
119.45 290.325  
ATIS  
125.9  
CLNC DEL  
119.2  
GND CON  
120.025  
OPA LOCKA TOWER\*  
134.675 (CTAF)



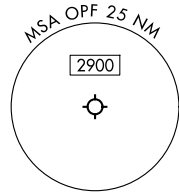
### TAKEOFF MINIMUMS

Rwy 9L: Standard with minimum climb of 500'/NM to 1000.

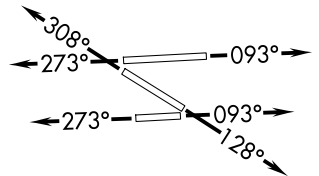
Rwy 9R: Standard with minimum climb of 500'/NM to 700.

Rwys 12, 27R: Standard with minimum climb of 500'/NM to 600.

Rwys 27L, 30: Standard.



- NOTE: Jet aircraft only.
- NOTE: Accelerate to 250K until leaving 10000, if unable, advise ATC.
- NOTE: MERKS Transition ATC assigned only except aircraft landing: MKY, RSW, APF, PGD and FMY.



NOTE: Chart not to scale.



## DEPARTURE ROUTE DESCRIPTION

TAKEOFF RUNWAYS 9L/R: Climb on heading 093° or as assigned by ATC for RADAR vectors to cross MRENO at or above 5000, thence. . .

TAKEOFF RUNWAY 12: Climb on heading 128° or as assigned by ATC for RADAR vectors to cross MRENO at or above 5000, thence. . .

TAKEOFF RUNWAYS 27L/R: Climb on heading 273° or as assigned by ATC for RADAR vectors to cross MRENO at or above 5000, thence. . .

TAKEOFF RUNWAY 30: Climb on heading 308° or as assigned by ATC for RADAR vectors to cross MRENO at or above 5000, thence. . .

. . .on track 322° to BNGOS, then on assigned transition, maintain ATC assigned altitude, expect filed altitude within 10 minutes after departure.

COREA TRANSITION (BNGOS4.COREA)

DOLIE TRANSITION (BNGOS4.DOLIE)

MERKS TRANSITION (BNGOS4.MERKS)

# BNGOS FOUR DEPARTURE (RNAV)

(BNGOS4.BNGOS) 21MAR24

MIAMI, FLORIDA  
MIAMI-OPA LOCKA EXEC (OPF<sup>T</sup>)

SE-3, 23 JAN 2025 to 20 FEB 2025

SE-3, 23 JAN 2025 to 20 FEB 2025