

(HURCN4.HURCN) 24081

AL-256 (FAA)

MIAMI-OPA LOCKA EXEC (OPF)

# HURCN FOUR DEPARTURE (RNAV)

MIAMI, FLORIDA

RNAV-1 DME/DME/IRU or GPS.

RADAR required.

**TOP ALTITUDE:  
ASSIGNED BY ATC**

MIAMI DEP CON  
119.45 290.325  
ATIS  
125.9  
CLNC DEL  
119.2  
GND CON  
120.025  
OPA LOCKA TOWER★  
134.675 (CTAF)

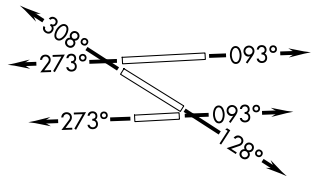
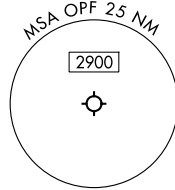
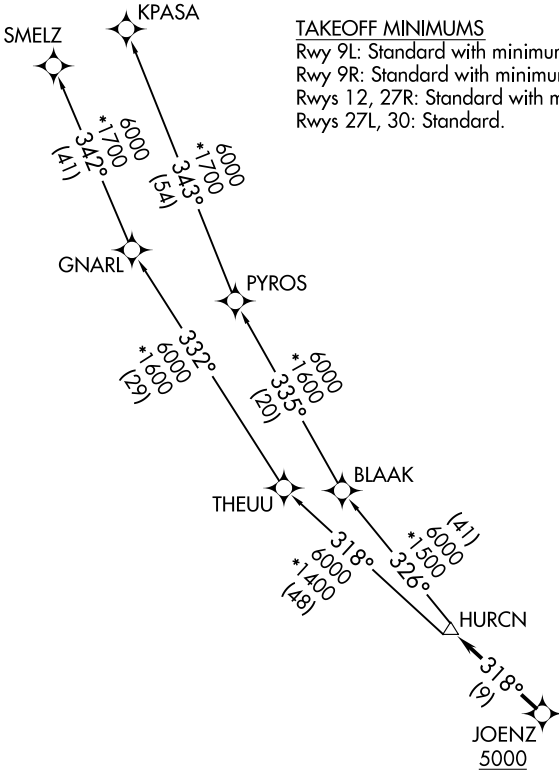
### TAKEOFF MINIMUMS

Rwy 9L: Standard with minimum climb of 500'/NM to 1000.

Rwy 9R: Standard with minimum climb of 500'/NM to 700.

Rwys 12, 27R: Standard with minimum climb of 500'/NM to 600.

Rwys 27L, 30: Standard.



NOTE: Jet aircraft only.  
NOTE: Accelerate to 250K until leaving 10000,  
if unable, advise ATC.

NOTE: Chart not to scale.

(CONTINUED ON FOLLOWING PAGE)

# HURCN FOUR DEPARTURE (RNAV)

(HURCN4.HURCN) 21MAR24

MIAMI, FLORIDA

MIAMI-OPA LOCKA EXEC (OPF)

SE-3, 23 JAN 2025 to 20 FEB 2025

SE-3, 23 JAN 2025 to 20 FEB 2025