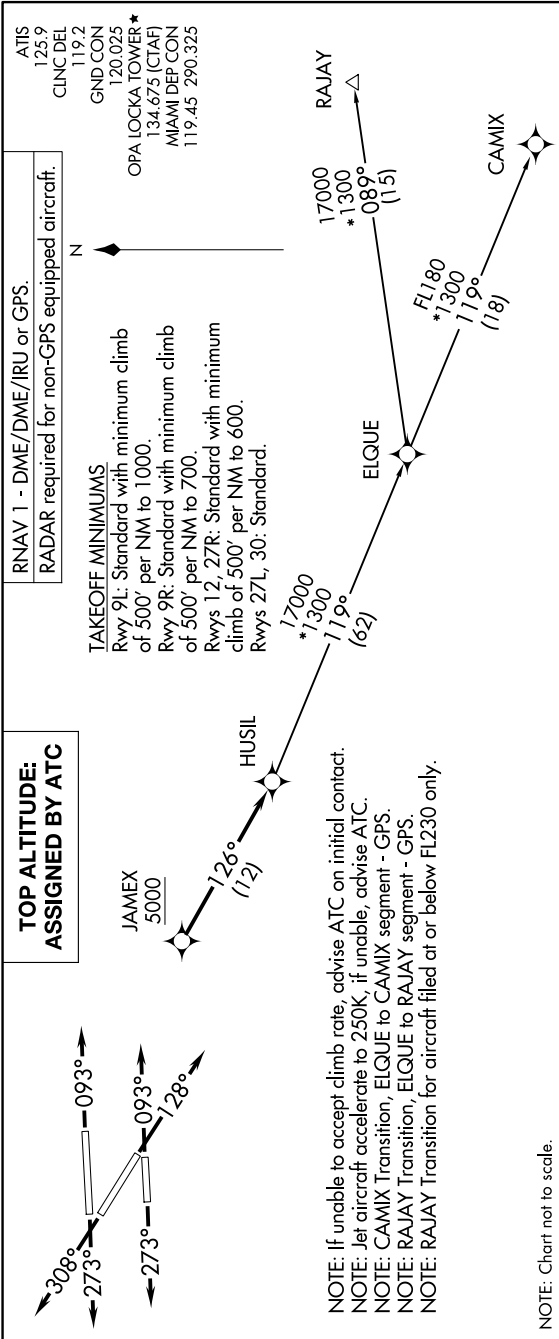


# HUSIL THREE DEPARTURE(RNAV)

SE-3, 23 JAN 2025 to 20 FEB 2025



**DEPARTURE ROUTE DESCRIPTION**

**TAKEOFF RUNWAYS 9L/R:** Climb on heading 093° or as assigned by ATC for RADAR vectors to cross JAMEX at or above 5000, thence...

**TAKEOFF RUNWAY 12:** Climb on heading 128° or as assigned by ATC for RADAR vectors to cross JAMEX at or above 5000, thence...

**TAKEOFF RUNWAYS 27L/R:** Climb on heading 273° or as assigned by ATC for RADAR vectors to cross JAMEX at or above 5000, thence...

**TAKEOFF RUNWAY 30:** Climb on heading 308° or as assigned by ATC for RADAR vectors to cross JAMEX at or above 5000, thence...

...on track 126° to HUSIL. Then on assigned transition. Maintain ATC assigned altitude, expect clearance to filed altitude within 10 minutes after departure.

**CAMIX TRANSITION (HUSIL3.CAMIX)**  
**RAJAY TRANSITION (HUSIL3.RAJAY)**

SE-3, 23 JAN 2025 to 20 FEB 2025

# HUSIL THREE DEPARTURE (RNAV)

(HUSIL3.HUSIL) 19MAY22